



# Farmland Preservation

*2021 NASCA*

Kate Delavan, Office of Farmland Preservation  
Josh Giuntoli, SW Regional Manager

Washington State



**Conservation  
Commission**





*Agricultural Conservation Easements*





*Natural Resource and Farm protection*





*Working in the Community*



An aerial photograph showing a river winding through a rural landscape. The river is surrounded by dense green trees and shrubs. To the left, a small white structure is visible on a dirt bank. The right side of the river is a large, open field with a wooden fence and several large, circular objects, possibly hay bales or agricultural equipment. In the background, there are more trees and a clear sky.

*Protecting the Investments*

# **Farmland Roundtable**

**Led by Office of Farmland Preservation in coordination with county staff**

**Space for farmland protection practitioners and stakeholders to network, share resources, and learn from one another.**

**Includes county, state, federal, congressional, lenders, land trusts, CDs and others.**



# THE 2019 WASHINGTON STATE AGLAND DATABASE



Luke Rogers  
Jeffrey Cornick  
Andrew Cooke

Natural Resources Spatial Informatics Group  
Precision Forestry Cooperative  
School of Environmental and Forest Sciences  
University of Washington

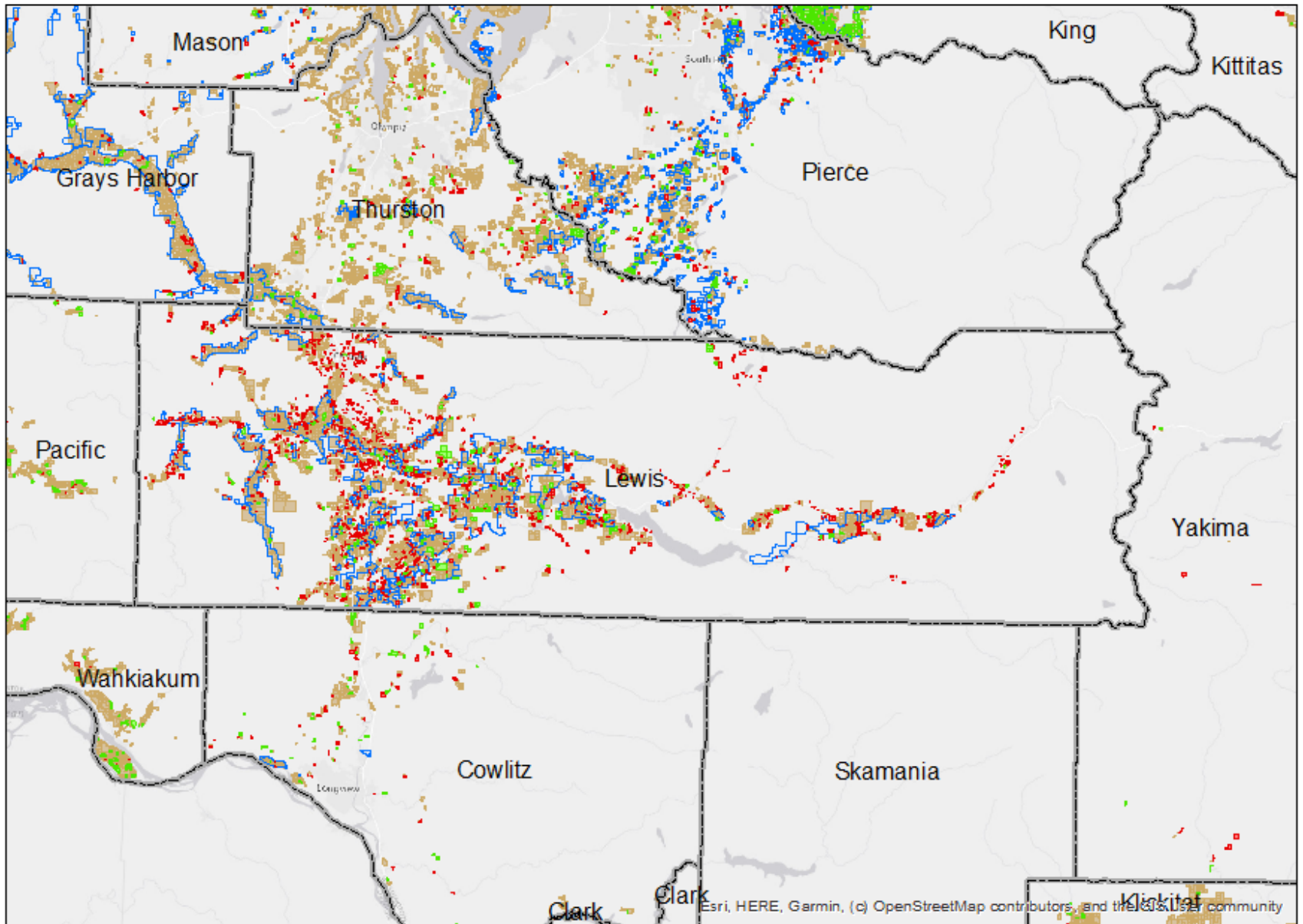


March 24, 2021

# Washington State Agricultural Land Database

# Lewis County

■ Converted to Ag   ■ Converted From Ag   ■ Ag in 2007 and 2019    Zoned Agriculture





# **FarmPAI – New Opportunity**

**Farmland Protection and Affordability  
Investment (FarmPAI)**

**Collaboration between OFP, land trusts, and  
the Washington State Housing Finance  
Commission**

**New source of financing for the acquisition of  
land for affordable farmland access and long-  
term conservation.**





COWICHE RANCHES



**FOR SALE**

← 40 ACRES w/ Cabin  
CALL FOR Appointment  
509-656-9  
All Private Property Past this s  
Mike + T. a...

*Locally Led Conservation*





# Questions?

## Contact:

Kate Delavan

[kdelavan@scc.wa.gov](mailto:kdelavan@scc.wa.gov)

Josh Giuntoli

[jgiuntoli@scc.wa.gov](mailto:jgiuntoli@scc.wa.gov)



Washington State  
Conservation Commission