

Conservation District End of Year Reports

FY 2021

CD End of Year Reports Checklist

Due September 1, 2021

- _____ Instructions for EOY CD financial Reports
- _____ CD Balance Sheet comparing FY 20 & 21
- _____ CD Profit & Loss statement comparing FY 20 & 21
- _____ CD Comparative Budget (FY 21 actual & FY 22 projected)
- _____ CD Financial Review statement for FY 21 (signed by all directors)
- _____ CD Annual Report (A report of CD accomplishments in FY 21)
- _____ CD Thistle Report for FY 21
- _____ CD Application for Appropriations for FY 23 funding
- _____ CD Beaver Control Plan for FY 23
- _____ CD Beaver Program Funding Request for FY 23
- _____ CD Board Composition Survey
- _____ CD Employee & Director Contact Information

Please review “Notes: CD End of Year Reports Instructions” for assistance with financial reports.

Please review the Beaver Control example plan for assistance if needed.

Please complete a CD Employee and Director Information form for each director and employee.

Please attach all reports to one email for ease of handling and filing. Email completed end of year reports packet to Mary Elizabeth Lea and send a copy to your Environmental Program Coordinator.

CD Balance Sheet
Comparing FY 20
and 21



CD Profit and Loss
Statement Comparing
FY 20 and 21

CD Comparative
Budget (FY 21 actual
and FY 22 projected)

Quick
Books
Generated
Reports

**Notes: CD End of Year Reports Instructions
Due September 1, 2021**

YEAR END REPORT INSTRUCTIONS:

Please include the following financial and written reports with your districts end of year report packet to be emailed to the Ryan Benefield and your Land Resource Specialist no later than September 1, 2021. If possible, **please email all end of year reports at one time to avoid separation or being misplaced.**

1. Comparative Balance Sheet using quick books as of June 30, 2021

Go to “Reports” at the top of the screen. Select “Company and Financial”. Select “Balance Sheet Previous Year Comparison”. In the dropdown box, next to “dates” you can select “last fiscal year” to get the report set to June 30, 2021 or you can manually change the date next to “as of” to June 30, 2021 and hit “refresh”. Once the report is on the screen go to “customize report”. Uncheck the box for “percentage change”. Select “OK”. Once this is done, the balance sheet should show the balances for June 30, 2020; June 30, 2021 and the dollar change between the two years.

2. Comparative Profit and Loss using quick books for the period JULY 1, 2020 thru JUNE 30, 2021.

Go to “Reports” at the top of the screen. Select “Company and Financial”. Select “Profit and Loss Previous Year Comparison”. In the drop down box next to “dates” you can select “last fiscal year” to get the report set to July 1, 2020 to June 30, 2021 or you can manually change the date next to “from” to July 1, 2020 to June 30, 2021 and hit “refresh”. Once the report is on the screen go to “customize report”. Uncheck the box for “percentage change”. Select “OK”. Once this is done the **profit and loss** should show the balances for June 30, 2020, June 30, 2021 and the dollar change between the two years.

Notes:

- These are the only two financial reports we require. (*Bank statement or bank reconciliation is not needed.*)
- When you print the reports, please print them portrait (this should automatically be selected). If you follow the instructions above, the report should fit printing portrait.

VERY IMPORTANT:

- If you have NRCS retiree technician, CTA technician or TSP hours in which you are receiving reimbursement, please name the account the deposits are coded to either “NRCS Retiree Technician, CTA Technician or TSP reimbursement” or something similar so we’ll will know what these dollar amounts are. You can just rename the general ledger account they are in now.
- If you have large dollar amounts classified as “other”, please include a description of what this is.

ADDITIONAL INFORMATION:

If you had outstanding billings with NRCS as of June 30, 2021 (you had billed NRCS for technicians or TSP but hadn’t received the money by June 30) then please put a note for me on your financial statements indicating the amount of the outstanding billings. This will help compare the amount paid for technicians vs. the amounts reimbursed.

() CONSERVATION DISTRICT

Annual Financial Report Review

Fiscal Year 2021

We, the directors of the () Conservation District have examined the attached report and hereby attest that it is a true and accurate statement for the time period July 1, 2020 thru June 30, 2021.

Chairperson	Date	Vice Chairperson	Date
--------------------	-------------	-------------------------	-------------

Sec./Treasurer	Date	Director	Date
-----------------------	-------------	-----------------	-------------

Director	Date
-----------------	-------------

The attached reports were prepared by:

3. Annual Report Guidelines: The intent of this report is to create a written narrative of your conservation district for the year just completed, (July 1, 2020 thru June 30, 2021).

We would like to hear about new and established activities involving your district during the past year. Review district newsletters, meeting minutes, local news articles and internet correspondence to create a subject list to draw from. Visit with office staff and directors for their point of view on district workload and activities. Please include a discussion of the planning, preparation and work involvement of district employees, directors and conservation partners.

Let us know about your outreach and cooperation efforts with other individuals, groups and organizations. Where ideas, resources and manpower assets came from, so we can all learn from your involvement.

When discussing the past years projects and activities, let us know the areas of success, problems and even failure; it's often the most valuable take a way.

Simply, we would like to hear in your words about district projects, activities, field days, outreach, education efforts, partnership, local resource concerns and their improvement.



Lonoke County Conservation District

Annual Report

FY 2020

July 1, 2019 – June 30, 2020



LONOKE COUNTY CONSERVATION DISTRICT
ANNUAL REPORT
FY 2020
(July 1, 2019– June 30, 2020)

**THE MISSION OF LONOKE COUNTY CONSERVATION DISTRICT
IS TO PRESERVE AND DEVELOP SOIL AND WATER RESOURCES**

Conservation Districts were created by Act 197 of the General Assembly of the State of Arkansas for 1937. Conservation districts are independent subdivisions of the state government just as are the counties and school districts and are supervised by the Arkansas Natural Resources Commission.

Lonoke County Conservation District was officially organized 66 years ago, on September 24, 1954, by Secretary of State C. G. Hall. The Application for Certificate of Organization was signed by J. D. Wood and Baxley E. Ball who were the first appointed directors of the District. Lonoke had previously been a part of the Lonoke-Pulaski Soil Conservation District.



Current District Directors: Tom Fortner, Secretary-Treasurer, Billy Bennett, Vice Chairman; Neal Anderson, Member; Bill Sandage, Chairman; Robby Bevis, Member. Fortner, Bevis and Sandage hold elected positions, serving three-year terms. Anderson and Bennett are appointed by the state.

ADMINISTRATIVE:



The Conservation district office is open to the public daily, excluding holidays.

Twelve (12) regular monthly board meetings were held during FY 2020 to conduct the business and programs of the district. Directors are required to attend special meetings outside board meetings to be eligible to run for re-election or re-appointment. Three (3) directors attended the annual AACD state meeting in January 2020. Robby Bevis serves as President of AACD. Tom Fortner attended the East Central Area meeting in Batesville. Billy Bennett is the district's representative on the horizontal property regime, which is comprised of the three owners of the office complex at Oak Tree Plaza.

Bill Sandage, Tom Fortner, Billy Bennett, Neal Anderson and Robby Bevis attended the October 2019 meeting of the Quorum Court to give an annual report of the district activities and to express appreciation for the Quorum Court's support. The district hosted an evening meal for Quorum Court members.

The district continued to provide office space for the co-location of NRCS and FSA, while other office space is leased to a crop insurance office. Office space is provided for the Bayou Meto Irrigation District, free of charge, as part of the district's ongoing support of the Bayou Meto Irrigation Project.

Lonoke County plat books and wall maps were updated and published in 2018. These are available for sale in the district office.

INFORMATION AND EDUCATION:

The directors of LCCD strongly believe that information/education is important in the goal of conserving natural resources, especially the education of young people.



Danielle Kurz and Carson Cunningham (holding certificates), and pictured with district directors, were each awarded a scholarship by the Lonoke County Conservation District. Danielle is a student at University of Arkansas at Monticello, majoring in Plant & Soil Science, and was awarded a \$750 scholarship for one semester. Carson was awarded a \$1,500.00 scholarship and is a student at Arkansas State University at Jonesboro, majoring in agri-business.

- The district published a quarterly newsletter which was printed and mailed to approximately 500 landusers; state, county and city officials. This newsletter is used to notify landusers of well registration deadlines and programs available through the district and NRCS.
- The Plum Bayou Irrigation Project continues to draw attention as an example of methods to conserve groundwater by using surface water.



MARION BERRY PUMP STATION

- **The Conservation District supports and promotes the Bayou Meto Water Management District by providing office space, utilities etc. free of charge. Two of the directors (Neal Anderson and Robby Bevis) serve on the Bayou Meto Executive Board. Tours of pump plants of the irrigation project are conducted upon request.**

Ed Swaim is the Executive Director of Bayou Meto Water Management District. He formerly served as Chief of the Water Management Division of the Arkansas Natural Resources Commission. He is a native of England, AR.

Arkansas River water will be brought to Lonoke County to be used for irrigation. The Marion Berry Pump Station has six (6) pumps and will pump a total of 787,500 gallons per minute.

LONOKE COUNTY FAIR DISPLAY



The Conservation District's educational display in the Lonoke County Fair in September 2019 was entitled "Preserving Our Aquifers," which promotes the use of surface water for irrigation in order to save ground water.

A Lonoke County Conservation District Field Day was held on February 26, 2020 at the Bevis Farm to inform producers of programs available through the District, NRCS, FSA and Arkansas Natural Resources Commission (Arkansas Department of Agriculture). Producers were given valuable information concerning cover crops, irrigation water management, residue management. ANRC personnel presented information on well registration, state income tax credit and the 3% loan program.

CONSERVATION:

- **Lonoke County remains primarily an agricultural county. The district assisted NRCS and FSA in the signup of cost share programs and the monitoring of existing long-term contracts. These programs encourage the conservation of natural resources, enhance wildlife habitat and protect wetlands. Some of those programs are: EQIP, CRP, AGWI, WRP, CSP, MRBI, and RCPP.**
- **This year alone, Lonoke NRCS has obligated 10 EQIP contracts with 3,378.6 acres treated and funded for \$1,922,861.00. Six (6) RCPP EQIP contracts were awarded for one million dollars. There is a total of 206 active contracts with 144,069.18 acres treated and funded for \$25,256,916.67. The monetary benefit for Lonoke County farmers, landowners and businesses is immeasurable.**
- **The district participated in the TSP (Technical Service Provider) program to assist NRCS with these programs. The district was able to earn federal funds for the services provided by district employees.**
- **The Plum Bayou Irrigation Project is toured several times each year and demonstrates a method of conserving groundwater by using surface water and water from the Arkansas River. The project benefits area farmers in Lonoke, Pulaski and Jefferson Counties.**
- **Farmers received assistance in preparing applications for state income tax credit on eligible conservation practices such as reservoirs, tailwater recovery systems and land leveling. Six (6) landusers applied for the state income tax credit.**
- **The district paid cost-share on one relift pump with funding made available through water use reporting funds. This program encourages use of surface water and conservation of groundwater. Cost-share is paid on 40%, up to \$2,000.00, of the cost of the relift pump.**
- **The district also offers a cost share program for flow meters on “deep” irrigation wells that are in a sustaining aquifer. Installation of flow meters on these wells is required by state law. “Deep” irrigation wells are usually those 200 feet or deeper and in a sustaining aquifer such as the Sparta.**
- **The district continues to sponsor a beaver control program to help control flooding, improve drainage and protect hardwood timber. Between July 1, 2019 and June 30, 2020, bounty was paid on 738 beavers @ \$20 each for a total of \$14,760.00. Notarized affidavits are required from the landowner and the trapper to insure the District pays only for beavers trapped in Lonoke County. Funding for this project is provided by county, state and district funds.**

- The district provides the following materials and/or services for farmers and landowners:
 - * Survey marking flags
 - * Lonoke County plat books
 - * Lonoke County wall ownership maps
 - * Flow meters to measure output of irrigation wells
 - * Conservation equipment for rent



SPECIALTY LICENSE PLATE: Conservation Districts' specialty license plate has been approved by the Arkansas State Police and the Revenue Department. Individuals will pay an extra \$25 per plate. Forty (40) license plates were sold in 2019.

- The district secretaries assisted irrigation water users to register 3,200 wells/relifts for crop year 2019, which is required by state law.
- Conservation equipment (no-till drill, litter spreader, poly tubing reel,) is available for rent by farmers, ranchers and dairymen. The equipment is maintained and serviced by the district and is rented at a minimal fee. Liability and physical damage insurance are carried on all equipment. Twenty-eight (28) landusers rented the equipment during the fiscal year.
- The district sponsors the Arkansas Agriculture Water Quality Loan Program, which is a low interest loan program for the implementation of non-point source conservation practices. Eligible practices are (1) tail water recovery systems, (2) irrigation reservoirs, (3) no-till drills, (4) stacking sheds, (5) ponds and fencing for livestock, (6) land leveling and (7) irrigation pipe. Other practices may be eligible but must be submitted to Arkansas Natural Resources Commission for approval. Three (3) landusers made application for a loan. The Bank of England, First State Bank and AgHeritage have chosen to participate in the program.

2020 LONOKE COUNTY FARM FAMILY OF THE YEAR



**CONGRATULATIONS TO THE THAXTON BROTHERS PARTNERSHIP IN
CARLISLE**

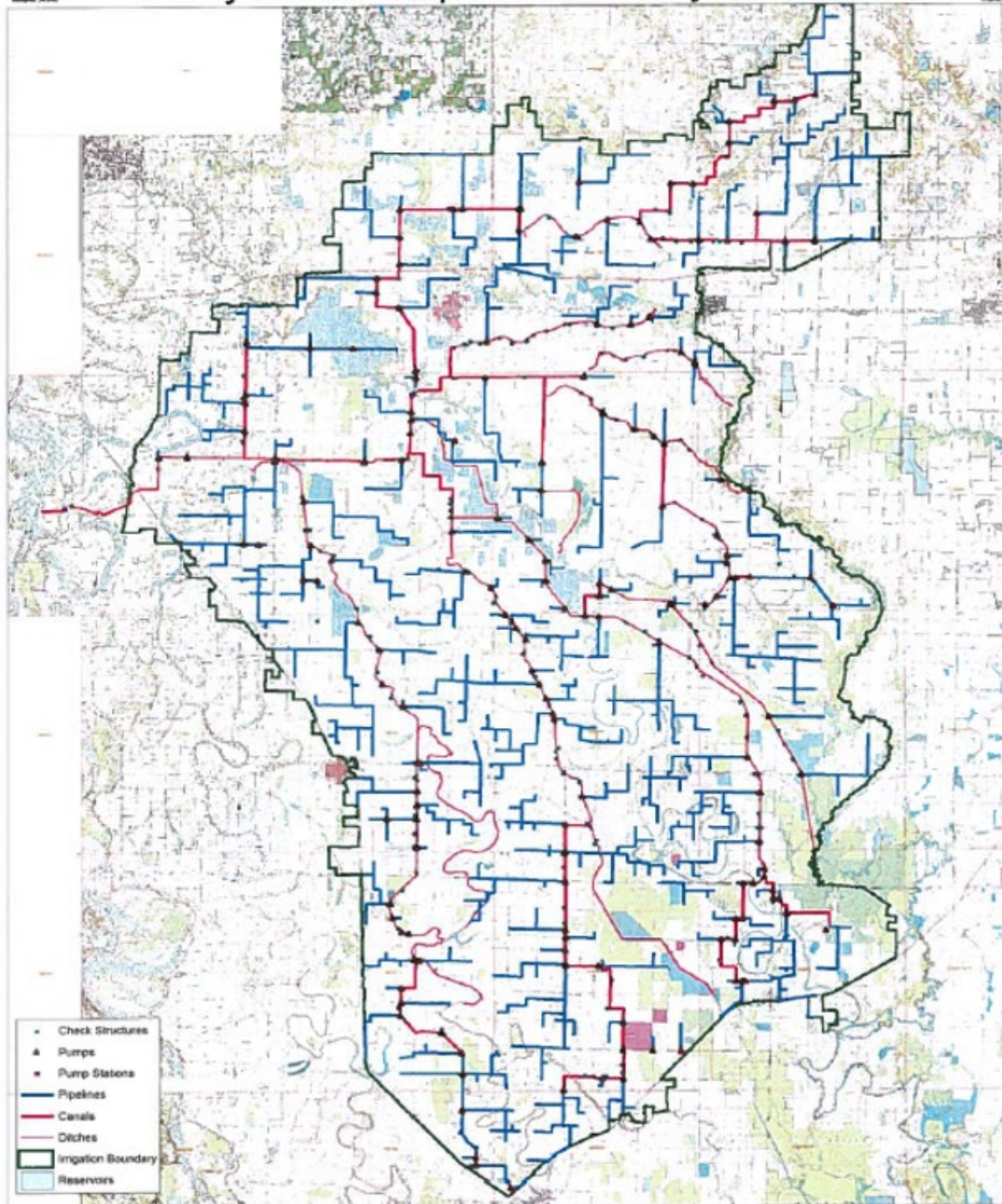
Clayton & Keaton Thaxton are second generation farmers, farming approximately 4,000 acres of corn, rice and soybeans. Pictured are Clayton & Elizabeth with sons Collin and Bentley; Keaton & Lindsey with sons Cash, Fischer and Steele

**THE LONOKE COUNTY CONSERVATION DISTRICT PLEDGES TO
CONTINUE ITS LEADERSHIP IN THE USE AND CONSERVATION OF
THE NATURAL RESOURCES OF LONOKE COUNTY.**



Bayou Meto Improvement Project Area

0 1 2 Miles



ARKANSAS THISTLE SURVEY

() CONSERVATION DISTRICT

Information related to fiscal year 21

How severe is the musk thistle problem in your district?

Rate from (1) no problem to (5) very severe problem.

Your districts rating:

Is there another thistle species in your district that causes more problems than musk thistle?

Yes, name of the species:

No, name not needed.

Of the acres infested with musk thistle (pastures, right of way, public lands, etc.) How would you rate the intensity level of musk thistle infestation?

<10%

10-25%

26-50%

51-75%

76-100%

Your estimate:

What type measures, if any, were used to control thistle in your district?

Please answer yes or no to each category.

1. Bushhog, mowing or other implements: ()

2. Herbicides: ()

3. Improved pasture management: ()

Other methods not listed:

If thistle infested pastures are cut for hay, does it leave the farm?

Does the district own sprayers for rent?

Has your district conducted educational programs concerning thistle control in FY 21?

Has the district cooperated with other agencies to discuss the control and eradication of thistles?

List below other methods would you propose to eradicate and control thistles?

Application for Conservation District Appropriations For FY 23

(_____) CONSERVATION DISTRICT

MAILING ADDRESS:

DATE:

Having received notice that payments will be made to conservation districts for the upcoming state fiscal year; and according to provisions of A.C.A. 14-125-109, the conservation district board of directors hereby makes application for state appropriated funds. The undersigned directors verify our knowledge of the purposes for which payments are to be received and agree to use such payments in accordance with the purpose for which they are made. We directors, further understand that we will be held accountable for any misuse of such payments and therefore agree to keep adequate financial records.

The amount of funds requested: \$ _____

Chairperson: _____

Vice Chairperson: _____

Secretary/Treasurer: _____

Director: _____

Director: _____

LONOKE COUNTY CONSERVATION DISTRICT

BEAVER CONTROL PLAN

FY 2021

JULY 1, 2020 - JUNE 30, 2021



**LONOKE COUNTY CONSERVATION DISTRICT
BEAVER CONTROL PLAN
FY 2021**

This beaver control plan is effective from July 1, 2020 to June 30, 2021. The plan will be funded by voluntary tax, special county funds, and state beaver funds and will be in effect year-round, or until funds are depleted.

The conservation district will pay \$20.00 per beaver, even after state funds of \$10.00 per beaver are depleted, and as long as the County continues its contribution of \$10.00 per beaver. The district proposes to pay for 500 (plus) beavers during the fiscal year 2021.

The district board hereby designates Andrea Fought, district secretary, as beaver control officer.

Beaver harvesters must file a written application with the conservation district before they may begin harvesting. Both the landowner and the harvester are required to sign notarized affidavits to the effect that the beavers were harvested from the property named on the affidavit. Both affidavits state: **“I acknowledge that discovery of any falsification of my documents to obtain a bounty through this program shall result in permanent expulsion from the Lonoke County Conservation District Beaver Control Program, as well as expulsion from all other county conservation district beaver control programs.”** The harvester’s affidavit also states: **“If falsification is discovered, I will be required to reimburse Lonoke County Conservation District all payments received on ineligible beaver.”**

A copy of the rules and regulations will be provided to the landowner and the trapper.

During each regular monthly meeting, the beaver control officer will report to the district board the number of beaver tails brought in by each certified harvester.

Quarterly, the district will submit a completed reimbursement form to the Natural Resources Conservation Commission and Lonoke County Judge.

RULES AND REGULATIONS

- 1) Landowner and harvester must sign notarized affidavits annually.
- 2) Harvesters shall present beaver tails to the beaver control officer who will cut a “V” notch in the rounded end.
- 3) Only beavers in Lonoke County are eligible for the bounty.
- 4) Trappers must negotiate with landowners for additional bounty.
- 5) Trappers must notify the conservation district when he/she begins trapping operations for a customer.
- 6) The trapper must receive permission from landowner, farmer, drainage district board or county judge before trapping on land in their control.
- 7) The trapper must complete a request for payment form for each landowner where trapping was conducted to claim a bounty payment.
- 8) To claim a bounty payment, the trapper must deliver the request for payment form, along with the tail and right front paw of each beaver, to the district office on Tuesdays between the hours of 8:30 a.m. and 4:00 p.m. (holidays excluded).
- 9) The trapper must remove all carcasses and/or parts from the conservation district premises after reporting number of beavers for bounty.
- 10) Lonoke County Conservation District will not be liable for any injuries or damages incurred by trappers.
- 11) Violation of any rules and regulations of the beaver control program or the laws of the Arkansas Game and Fish Commission will deem trappers ineligible for the bounty.
- 12) The Arkansas Game and Fish Resident Trapper Permit is required.
- 13) Trappers must allow at least seven (7) days to process bounty checks. Checks will be mailed to the trappers.
- 14) A list of registered trappers will be provided to landowners upon request.

**Conservation District Beaver Control Program
Act 430 of 1999
Funding for FY 2023**

To be completed by conservation district (PLEASE PRINT):

Date _____ Conservation District _____

Mailing Address _____

Contact Person _____

Telephone _____ Fax _____

Funds requested FY 2023 \$ _____

District Certification

I certify that I have furnished the Arkansas Natural Resources Commission a copy of my conservation district's Beaver Control Requested for funds FY 2023. I further certify that the information is correct, and that beavers and no other animals (muskrat, nutria, etc.) are claimed.

District Chairman

Please send form by email to:

**Miccah Barton – Program Coordinator
AR Dept. of Agriculture – Natural Resources Division
10421 W Markham St.
Little Rock, AR 72205
Email: miccah.barton@agriculture.arkansas.gov
Phone: 501-682-3968**

FOR COMMISSION USE ONLY

Conservation District Beaver funding for FY2023 \$ _____

CD Board

Composition Survey

Please give a numerical count to the appropriate category for the composition of your district board.

Female ()

Male ()

Other ()

Caucasian ()

African American ()

Hispanic / Latino ()

American Indian ()

Asian ()

Arabic ()

Pacific Islander ()

Indian ()

Other ()

Unknown ()

Prefer to not participate in survey () Mark with "X"



ARKANSAS DEPARTMENT OF AGRICULTURE

NATURAL RESOURCES DIVISION

Natural Resources Conservation District Contact Information

Conservation District	
Name of Conservation District	Position (Director, Office Mgr., Technician, etc.)

Contact Information	
Name	
Mailing Address	City, State, Zip
Email Address	
Primary Telephone Number	Secondary or Cell Phone Number

Date



NASCA

Arkansas Conservation needs your partnership!