



Welcome to Washington, NASCA



Carol Smith, Executive Director
Washington State Conservation Commission



CONSERVATION DISTRICTS
OF WASHINGTON STATE

your window to healthy lands













Agency Organization Chart

(as of August 2021)

BOARD OF COMMISSIONERS

Chair: Dean Longrie, Western Region Rep. (elected)

Perry Beale, Department of Agriculture

Jeanette Dornier, Washington Assn of Conservation Districts, President

Jim Kropf, WSU Extension

Sarah Spaeth, Jefferson Land Trust (governor appointee)

Vice-Chair: Harold Crose, Central Regional Rep. (elected)

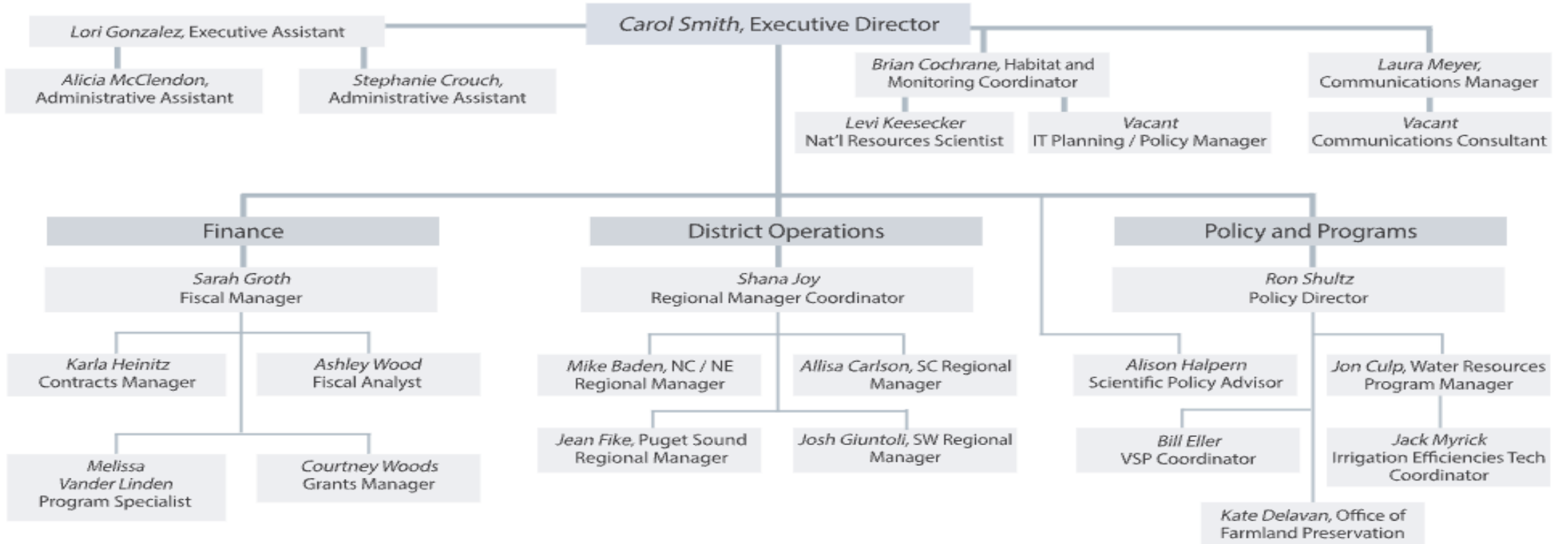
Larry Cochran, Eastern Region Rep. (elected)

David Giglio, Department of Ecology

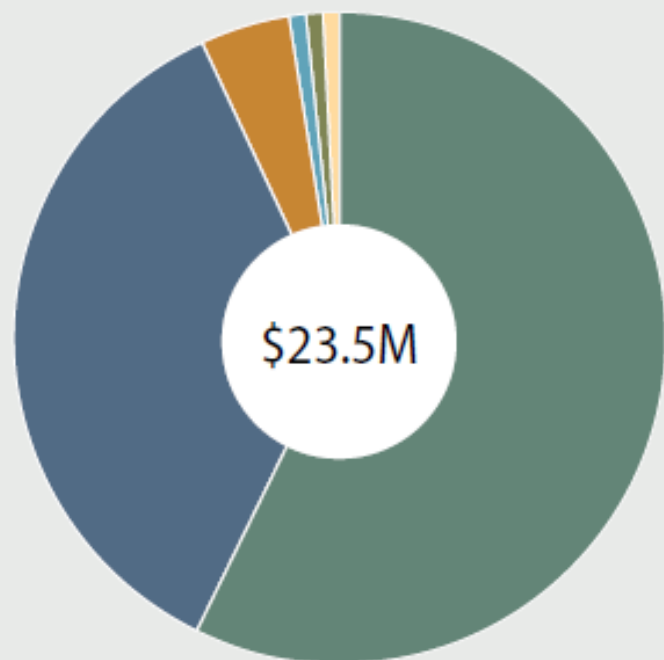
Terra Rentz, Department of Natural Resources

Daryl Williams, Tulalip Tribes (governor appointee)

STAFF



2019-2020 State Operating Budget



■ SCC Administration / Conservation District Operations - \$13,551,322 (includes 15% reduction for state COVID recovery)

■ Voluntary Stewardship Program (VSP) - \$8,456,000

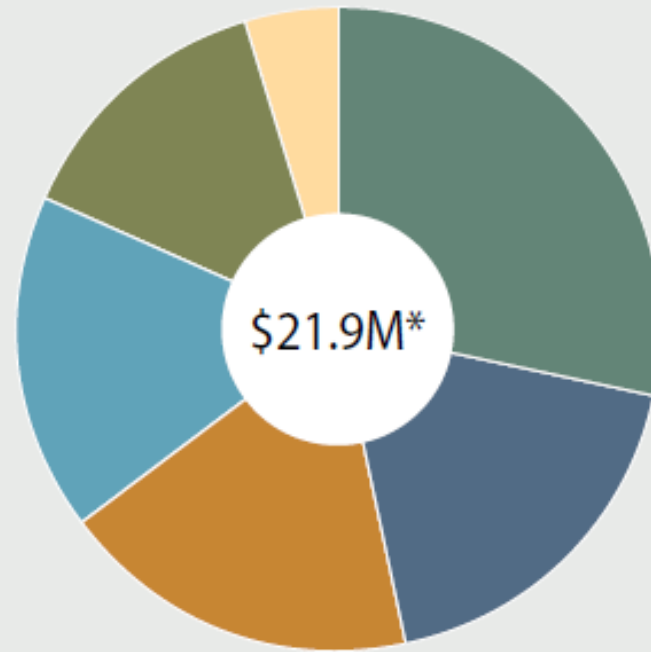
■ Conservation Technical Assistance: Salmon and Orca - \$1,000,000

■ Pension Funding Stabilization Acct Salaries and Expenses - \$254,000

■ Washington Food Policy Forum - \$159,000

■ Other - Sustainable Farms and Fields (\$99,000); Soil Health Initiative (\$55,000); Review of Grant Programs (\$20,000)

2019-2020 Capital Budget



\$21.9M*



*Not including reappropriations from 2017-19

Future Emphasis

- Soil Health
- Wildfire Resiliency and Recovery
- Sustainable Farms and Fields
- Food System
- Farmland Preservation Tools







Thank you!

Contact:

Carol Smith

csmith@scc.wa.gov



**Washington State
Conservation Commission**