

2007-2008
ALABAMA
COMMUNITY-BASED
WATERSHED
ASSESSMENT

ADEM

ALABAMA DEPARTMENT OF
ENVIRONMENTAL
MANAGEMENT



CWP

CLEAN WATER
PARTNERSHIP

SWCC

SOIL & WATER
CONSERVATION
COMMITTEE

AACD

ALABAMA
ASSOCIATION OF
CONSERVATION
DISTRICTS



**USDA-
NRCS**

NATURAL RESOURCES
AND CONSERVATION
SERVICE

AFC

ALABAMA FORESTRY COMMISSION

**2007-2008
ALABAMA
COMMUNITY-BASED
WATERSHED
ASSESSMENT**

ACES

Alabama Cooperative
Extension Service

ISD

Informational
Service Division

**PRIVATE CITIZENS
AND LOCAL
WATERBOARDS**

ADPH

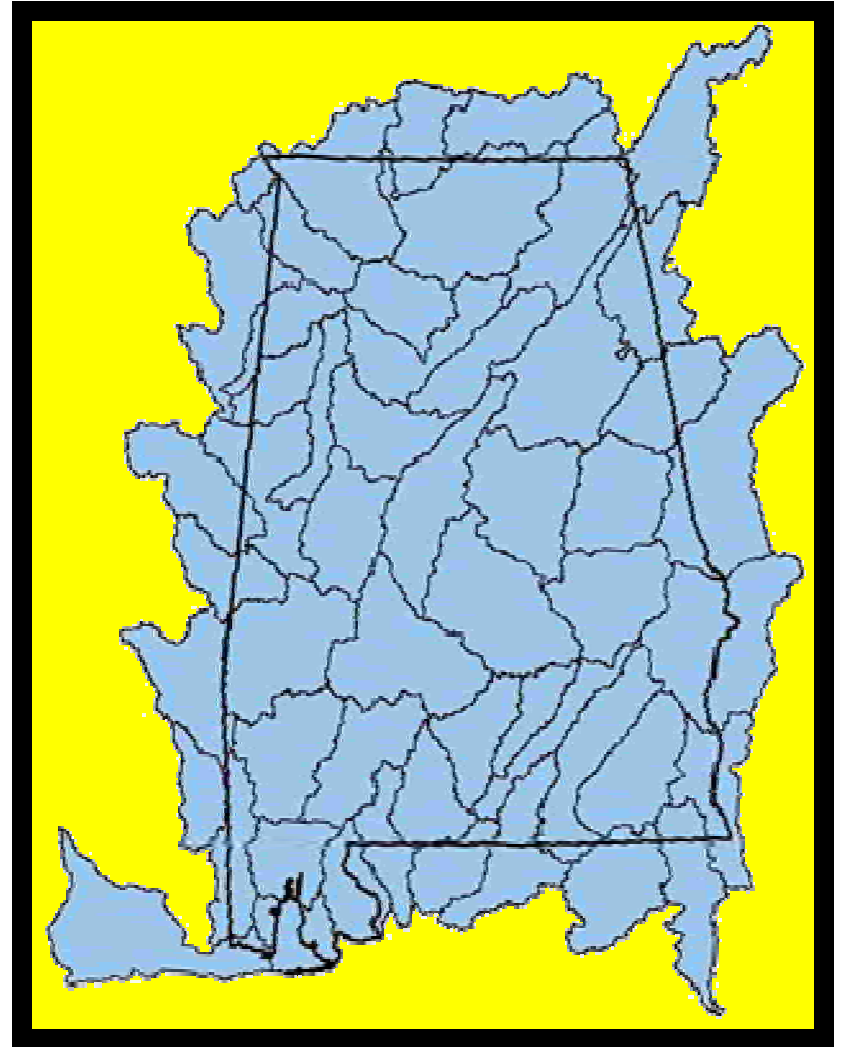
ALABAMA DEPARTMENT OF
PUBLIC HEALTH



The Alabama Community-Based Watershed Assessment

- μ Required by EPA every five years
- μ Last assessment was done in 1999
- μ Some funding from EPA / ADEM 319 grant
- μ 2007-2008 assessment covered all 317 watersheds (10digit huc's) in Alabama

The major goal of this effort is to protect or improve water quality in all the watersheds of Alabama.



So, the first step in protecting water quality was to assess activities on the land in each of the Soil and Water Conservation Districts

Key Elements Completed by all Soil & Water Conservation Districts

- μ Develop a 10 digit Hydrologic map
- μ Collect Data
- μ Enter data online vs. last assessment
- μ Hold Public Meetings
- μ Form Conservation Advisory Committee
- μ Develop a Plan of Action and set priorities
- μ Submit a report

Animal Waste



Urban Runoff



Sediment



Pesticides



Principle Non-Point Sources

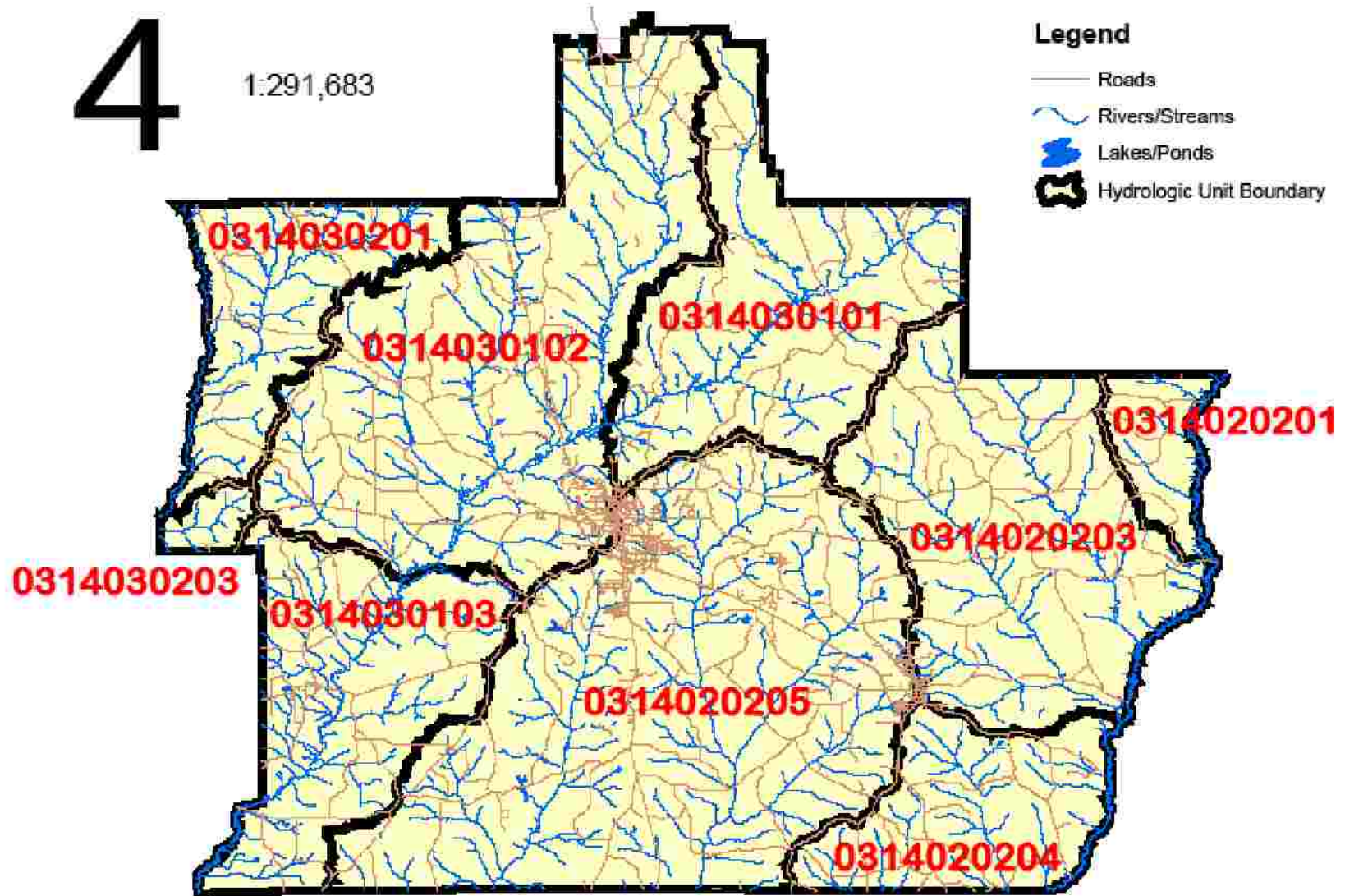
Onsite Domestic
Wastewater



Pike County, Alabama 10 Digit Hydrologic Units

4

1:291,683



Spreadsheets were developed and data was collected by each county.

Animal Spreadsheet

A	B	C	D	E	F	G	H	I
10-digit HUCs	Watershed Name	County	County Acres	Watershed Acres	% of WS acres in County	Number of Beef in County (cows, calves, steer)	Override Number of Beef in County, if needed.	Enter % Beef in WS
0314010301	Upper Yellow River	Covington	667,145	79318	11.9	32,400		
0314010302	Middle Yellow River	Covington	667,145	103499	15.5	32,400		
0314010303	Five Runs Creek	Covington	667,145	78497	11.8	32,400		
0314010304	Lower Yellow River	Covington	667,145	34105	5.1	32,400		
0314010306	Pond Creek	Covington	667,145	11590	1.7	32,400		
0314010401	Upper Blackwater R	Covington	667,145	44780	6.7	32,400		
0314010402	Blackwater River	Covington	667,145	123	0.0	32,400		
0314020206	Middle Pea River	Covington	667,145	7933	1.2	32,400		
0314020207	Flat Creek	Covington	667,145	39346	5.9	32,400		
0314020208	Corner Creek	Covington	667,145	30131	4.5	32,400		
0314030104	Middle Conecuh Riv	Covington	667,145	56626	8.5	32,400		
0314030105	Lower Conecuh Rive	Covington	667,145	94543	14.2	32,400		
0314030205	Lower Patsaliga Cre	Covington	667,145	43887	6.6	32,400		
0314030304	Middle Sepulga Rive	Covington	667,145	0	0.0	32,400		
0314030306	Lower Pigeon Creek	Covington	667,145	33986	5.1	32,400		
0314030307	Lower Sepulga Rive	Covington	667,145	8782	1.3	32,400		

The Complete Assessment will provide information such as:

- μ Forest
- μ Pasture land
- μ Animals
- μ Urban land
- μ Mined land
- μ Other land
- μ Erosion
- μ Cropland
- μ Water bodies
- μ Miles of perennial streams
- μ Rare/threatened/endangered species
- μ Cultural resources
- μ Other resource concerns

http://www.swcc.alabama.gov/pages/assessment_2007/data1.aspx

Data was compiled and placed onto the SWCC
web site

<http://www.swcc.alabama.gov>

SWCC
State of Alabama
SWCC
Soil & Water Conservation Committee

Home
About SWCC
Programs
Publications
AACD
SWC Districts
Calendar
Links
Contact

Our Mission...
To provide service, leadership, and assistance to all citizens for the wise use, conservation, and development of our natural resources.

Home | Contact | Alabama Directory | Media | Online Services | Alabama.gov | Governor | Statements/Policies | Alerts | Translation Resources | Feeds

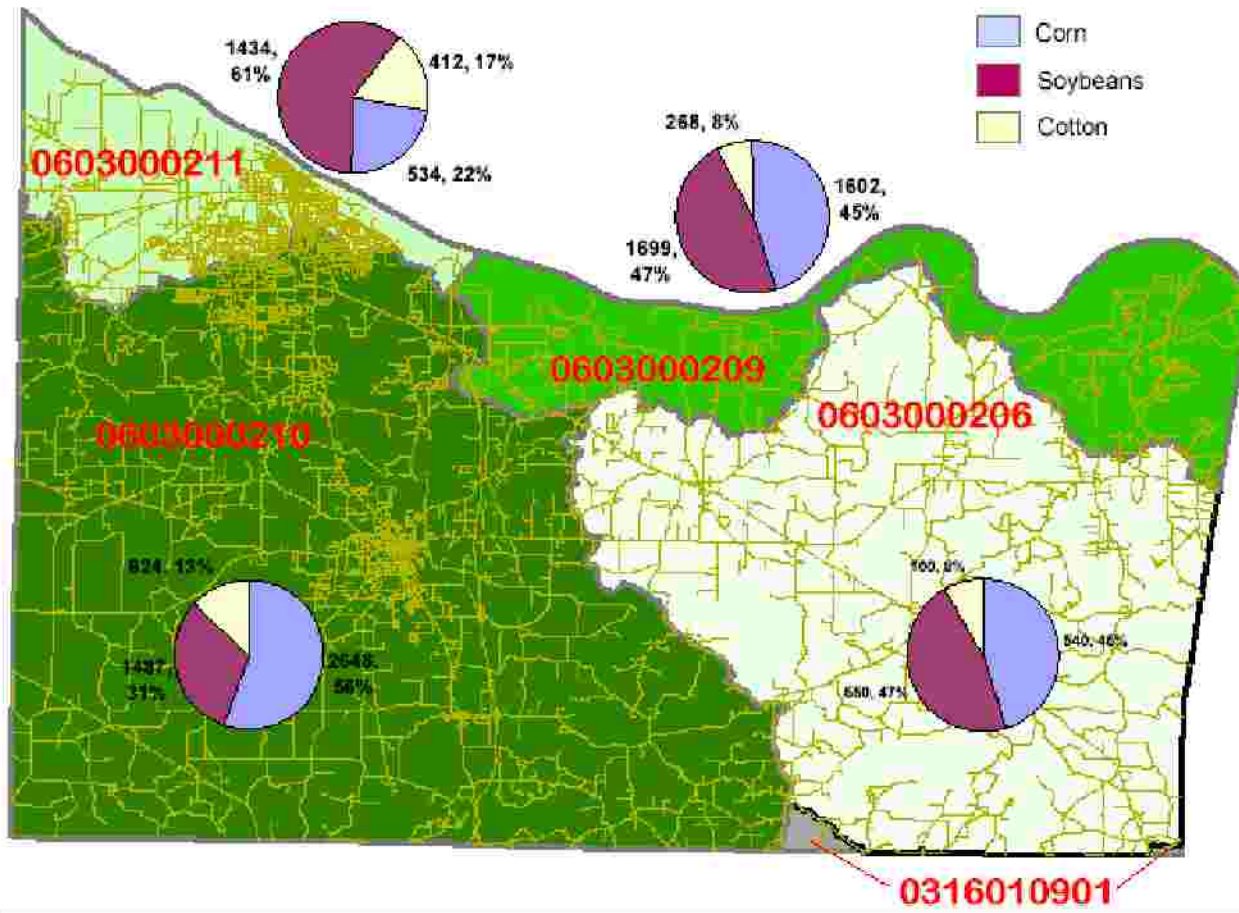
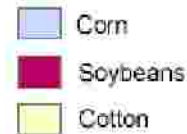
Morgan County, AL

Cropland Acreage by Watershed

LEGEND
Acres of Cropland



GRAPH LEGEND



3

1:284,790

Data Source:
online table, crops

How Can The Assessment Be Used?

Create public awareness of Water Quality

- Public meetings

- Talks to Civic Groups, schools

- Newspaper articles

Train new NRCS, FSA, & Extension personnel

Raise awareness for politicians

- (Legislators, Congressmen, Commissioners)

Seek funding (Commissioners, mayors, industry)

Focus Funding on watershed priorities and concerns (NRCS, ASWCC, etc.)

Focus monitoring



<http://www.swcc.alabama.gov>

J. O. Norris

WATER QUALITY COORDINATOR

State Soil and Water Conservation Committee
100 North Union Street
P.O. Box 304800
Montgomery, Al 36130

Office 334-242-2662

Fax 334-242-0551