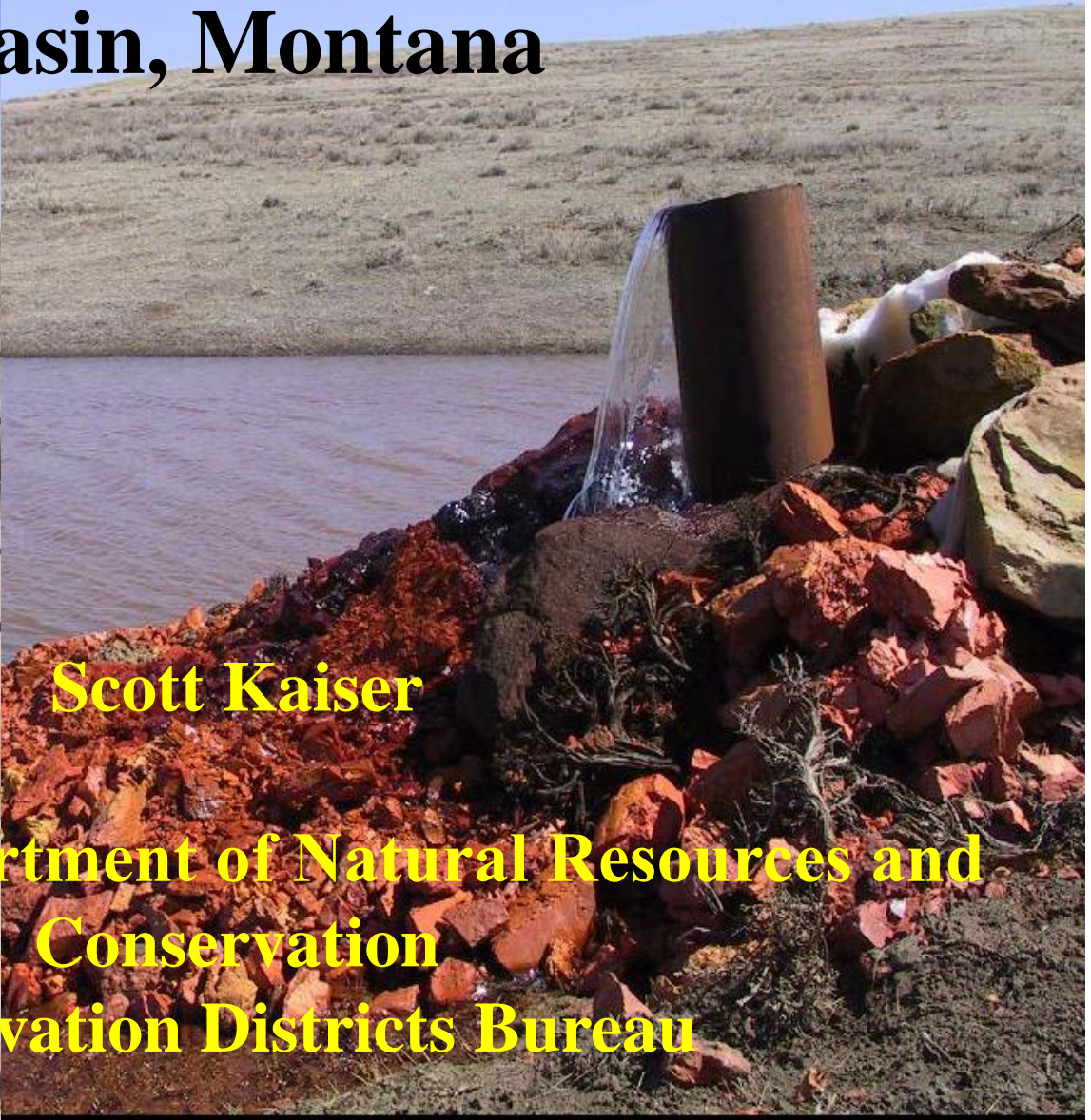


Ground-water issues associated with coalbed methane in the Powder River Basin, Montana

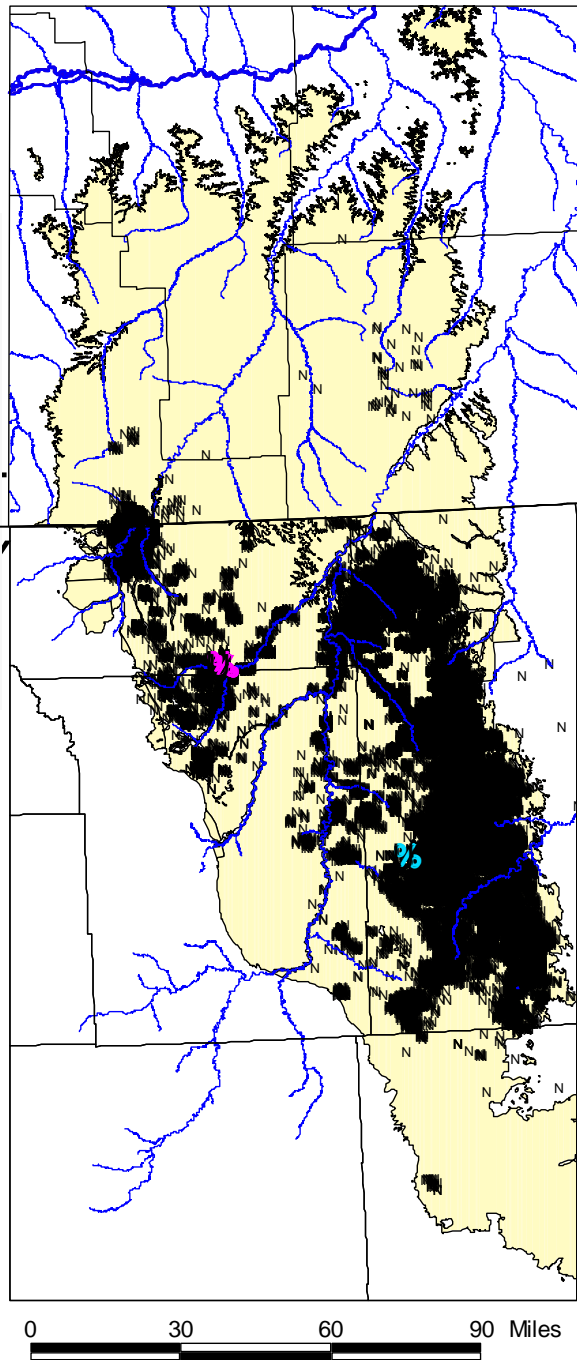


Scott Kaiser

**Montana's Department of Natural Resources and
Conservation
Conservation Districts Bureau**

Montana

Wyoming



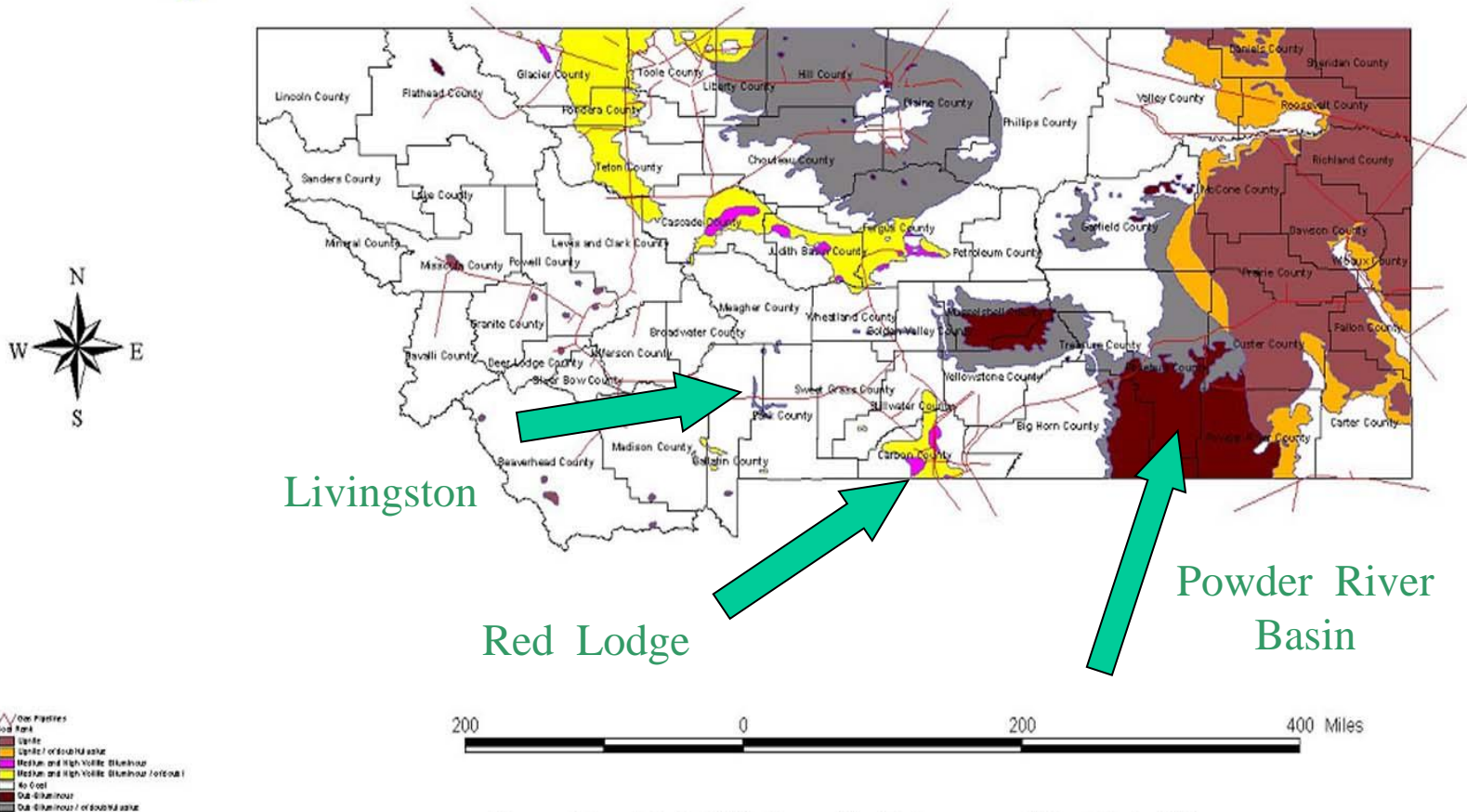
X Locations of
CBM wells and
permits in the
Powder River Basin

Λ

Very different water issues in each field



Coal and coalbed methane in Montana

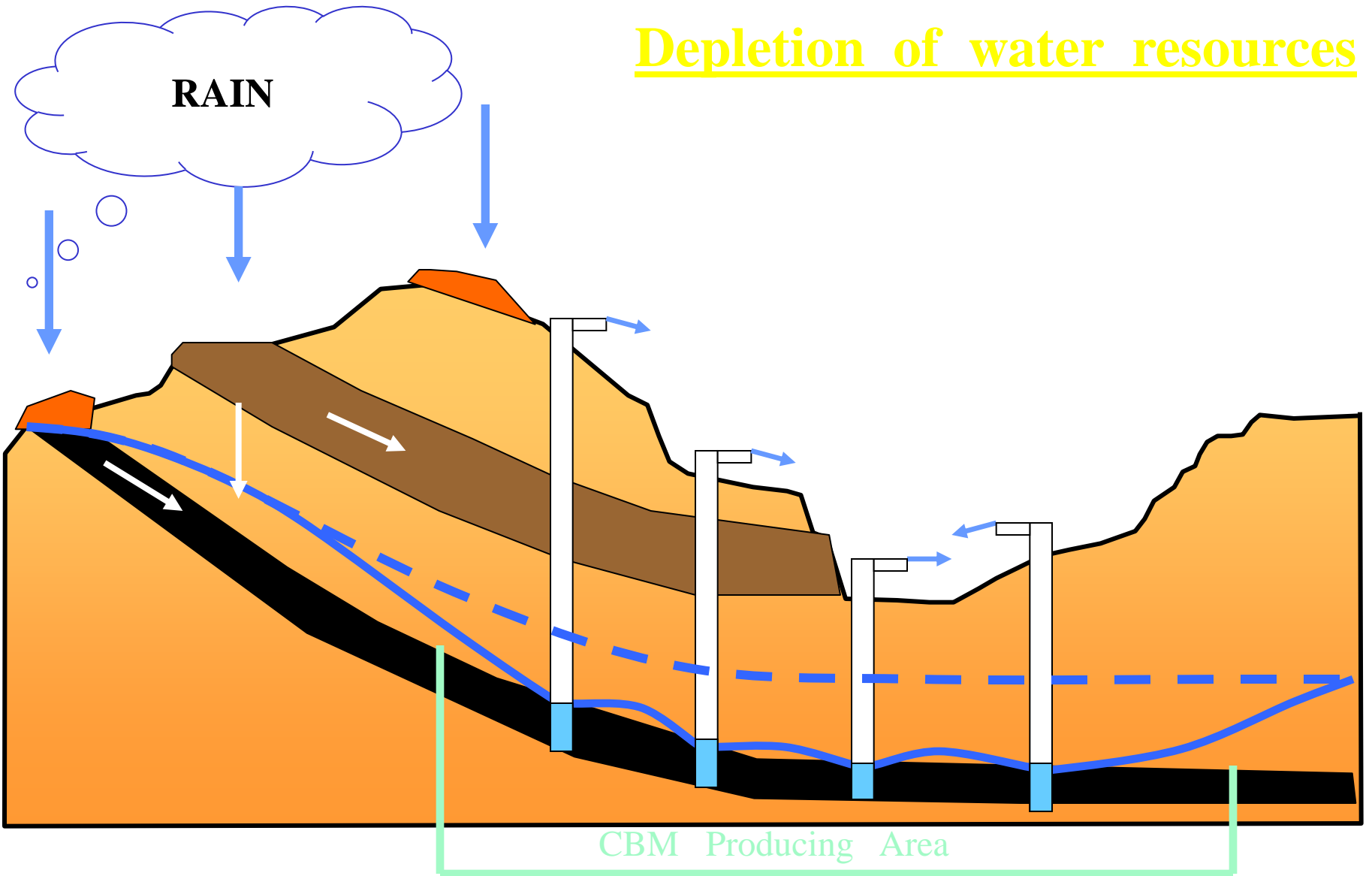


No warranty is made by the BLM for the use of the data for purposes not intended by the BLM

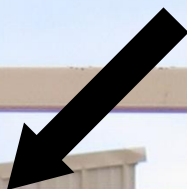
Coal Data is from Coal Fields of the Conterminous United States, USGS, OF 96-92



Depletion of water resources



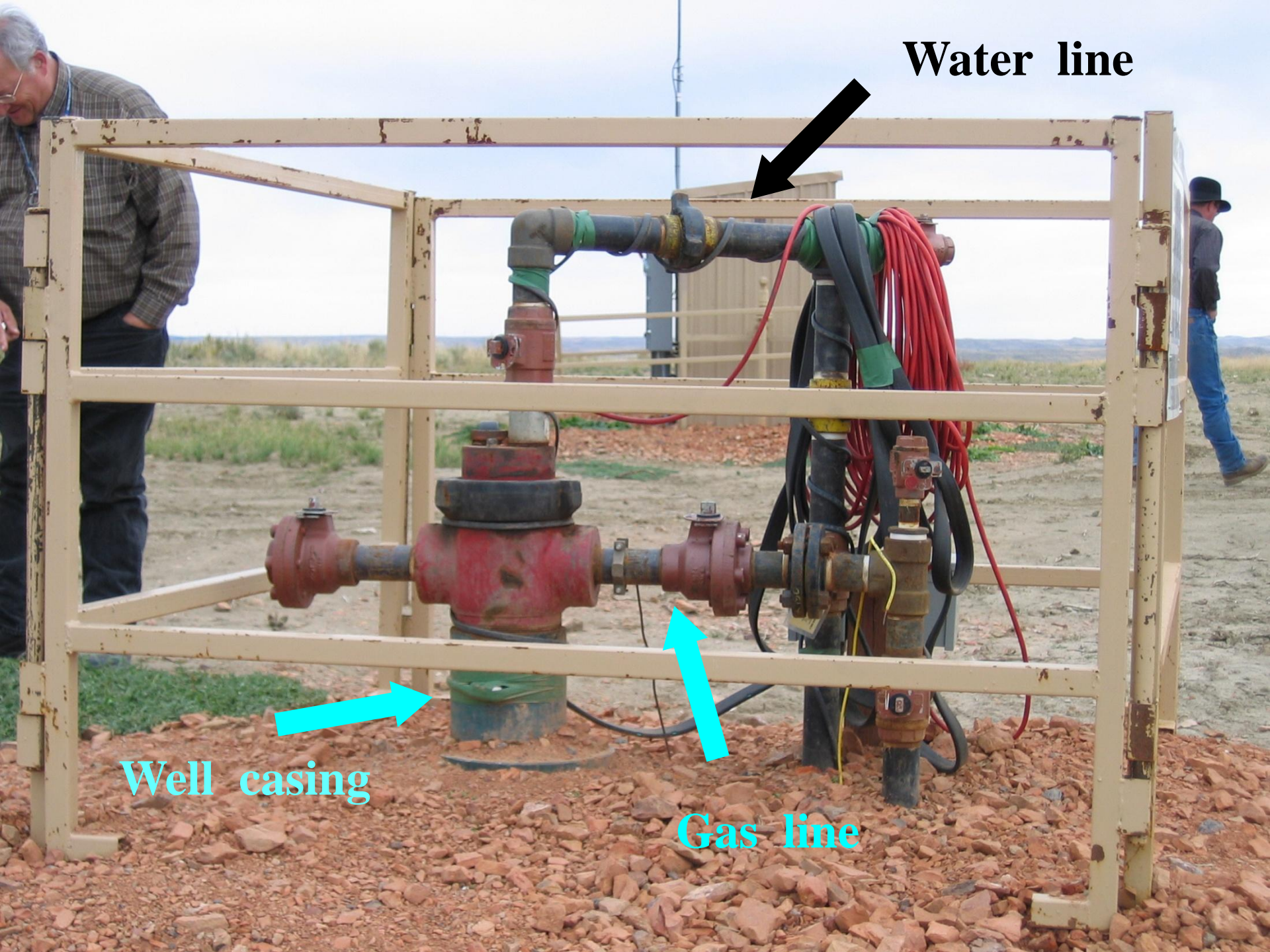
Water line

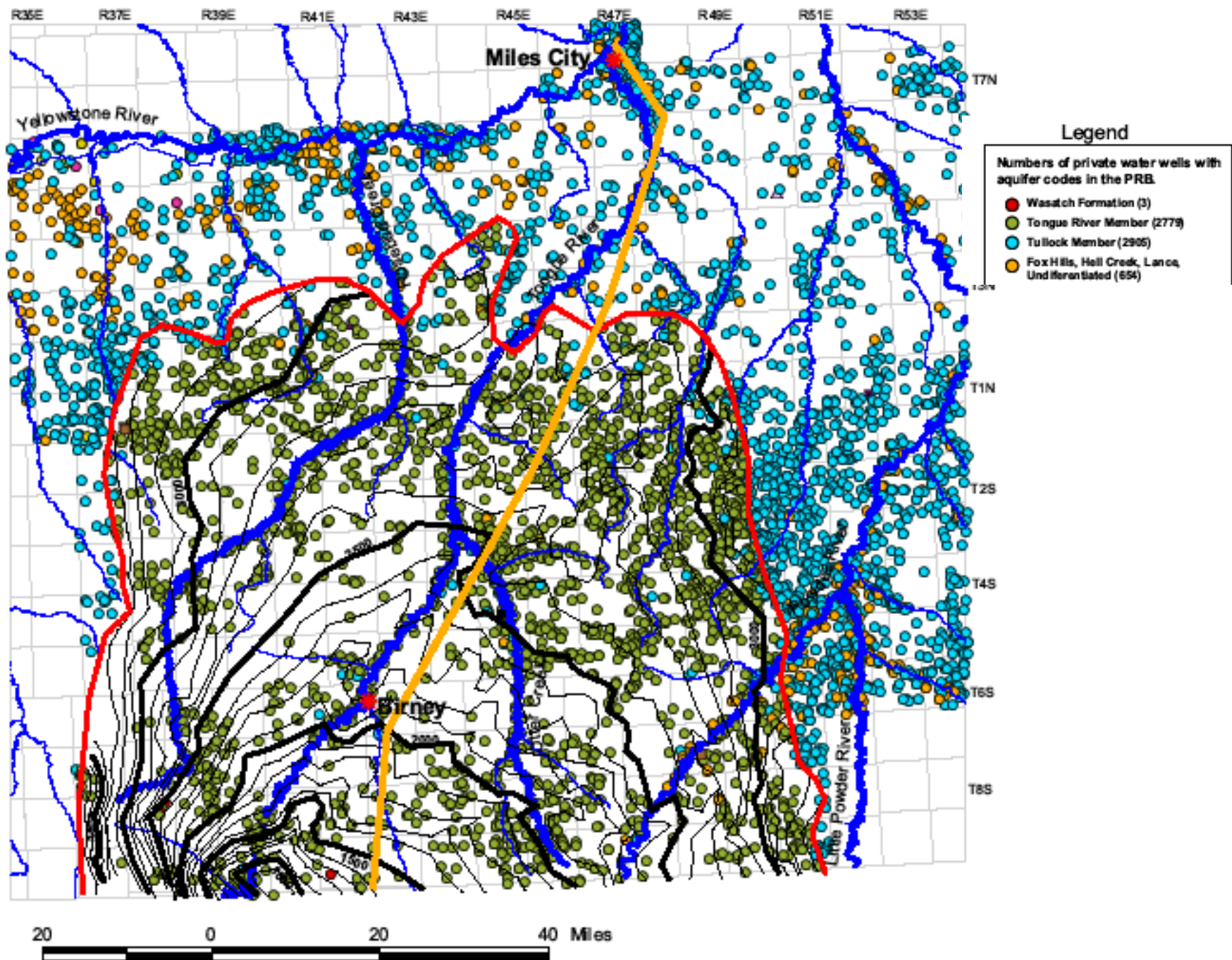


Well casing



Gas line



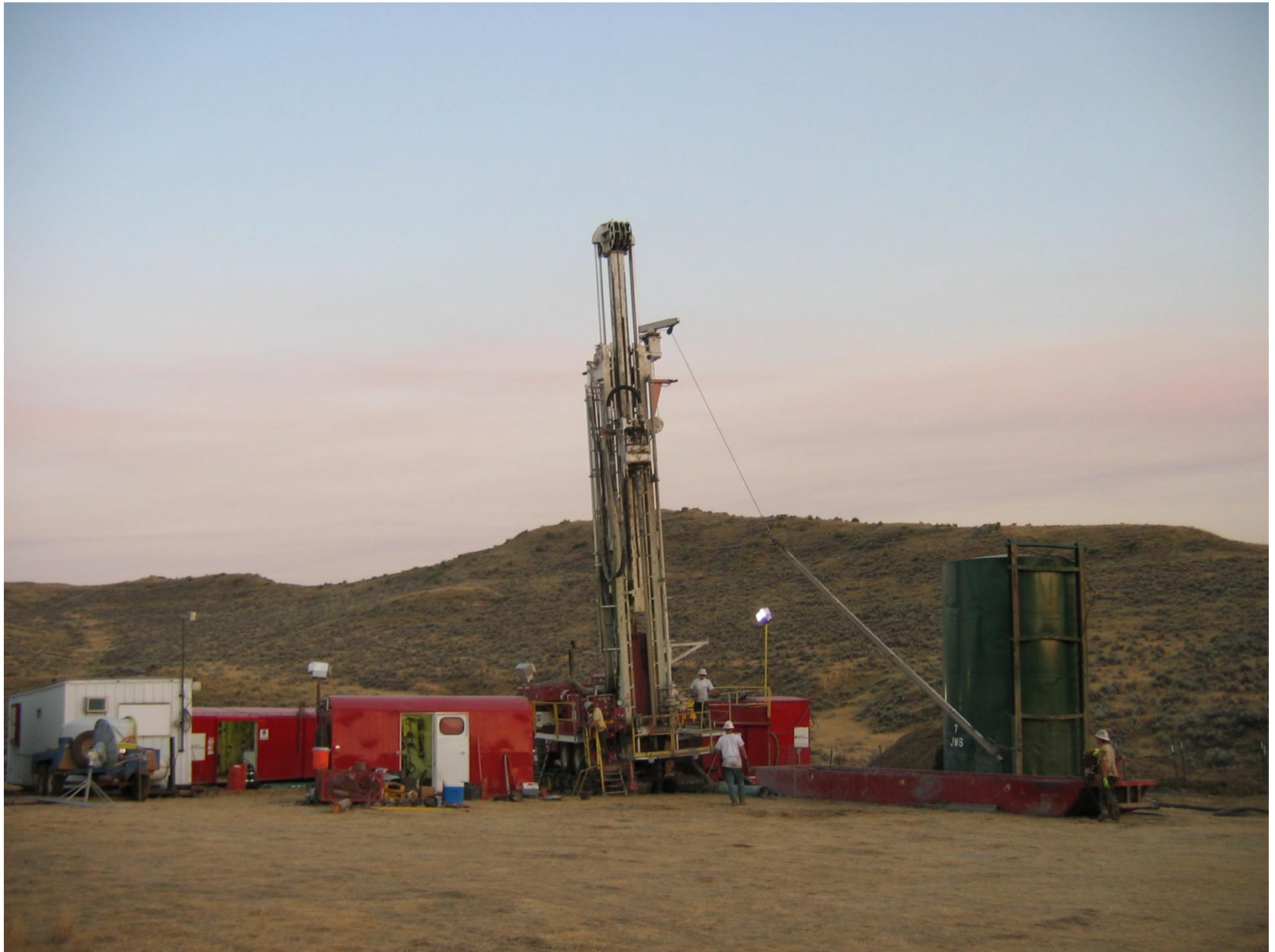




Coalbed Methane Regional Ground – Water Monitoring Network Montana Portion of the Powder River Basin

**Montana Bureau of Mines and Geology
Bureau of Land Management
Montana Department of Natural Resources
and Conservation Districts**





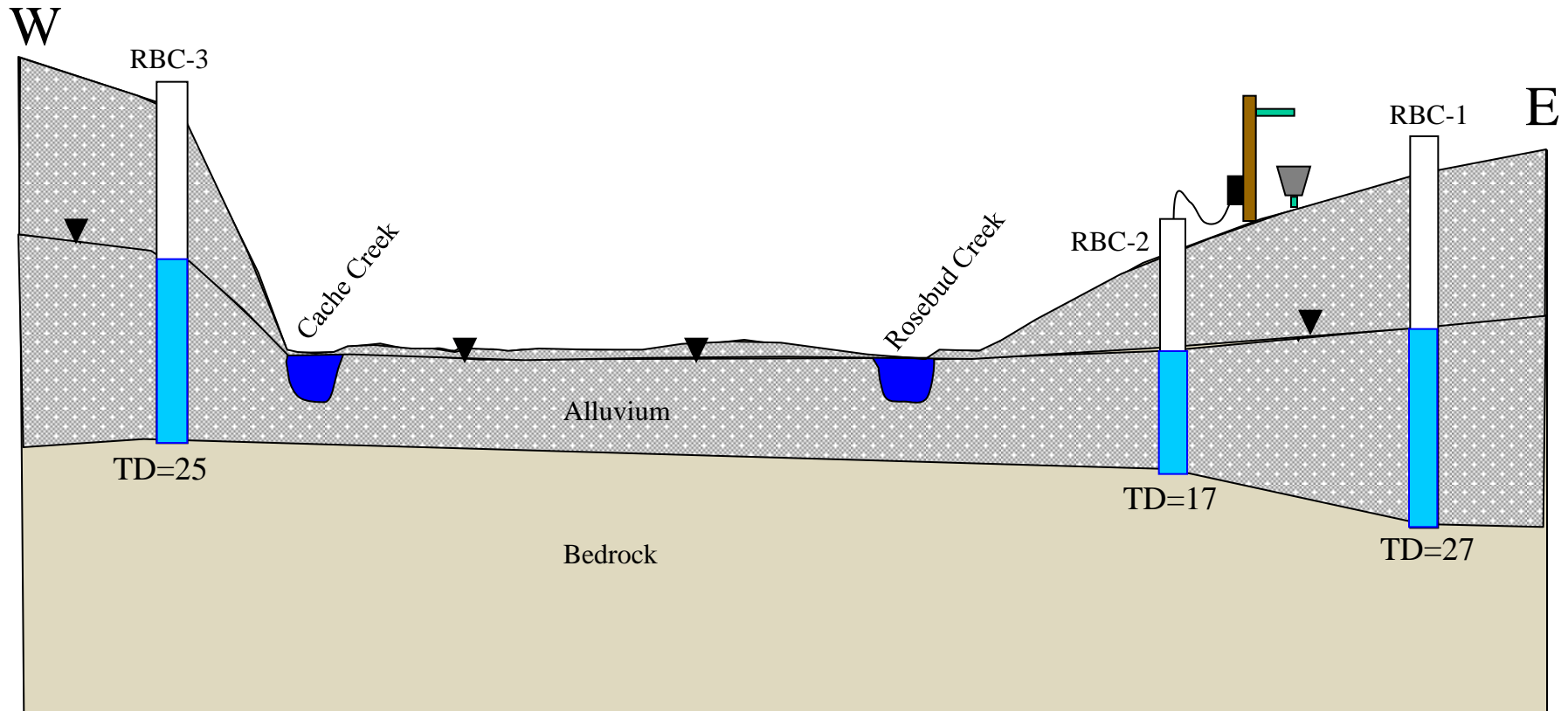
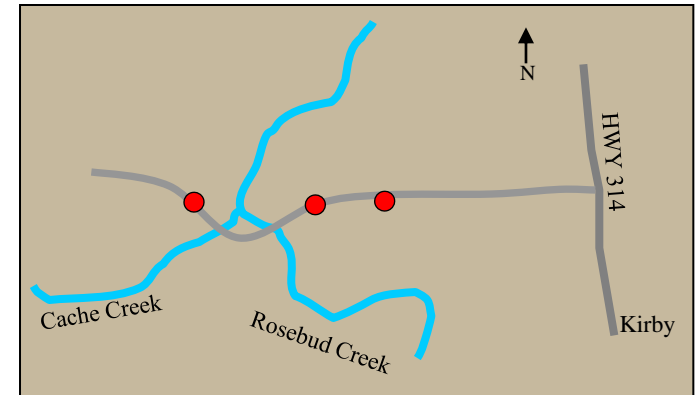


**Monitoring well and meteorological station
Rosebud Creek near Kirby, Montana**



Site RBC

A cooperation project with
Rosebud Conservation Dist.
Background Data











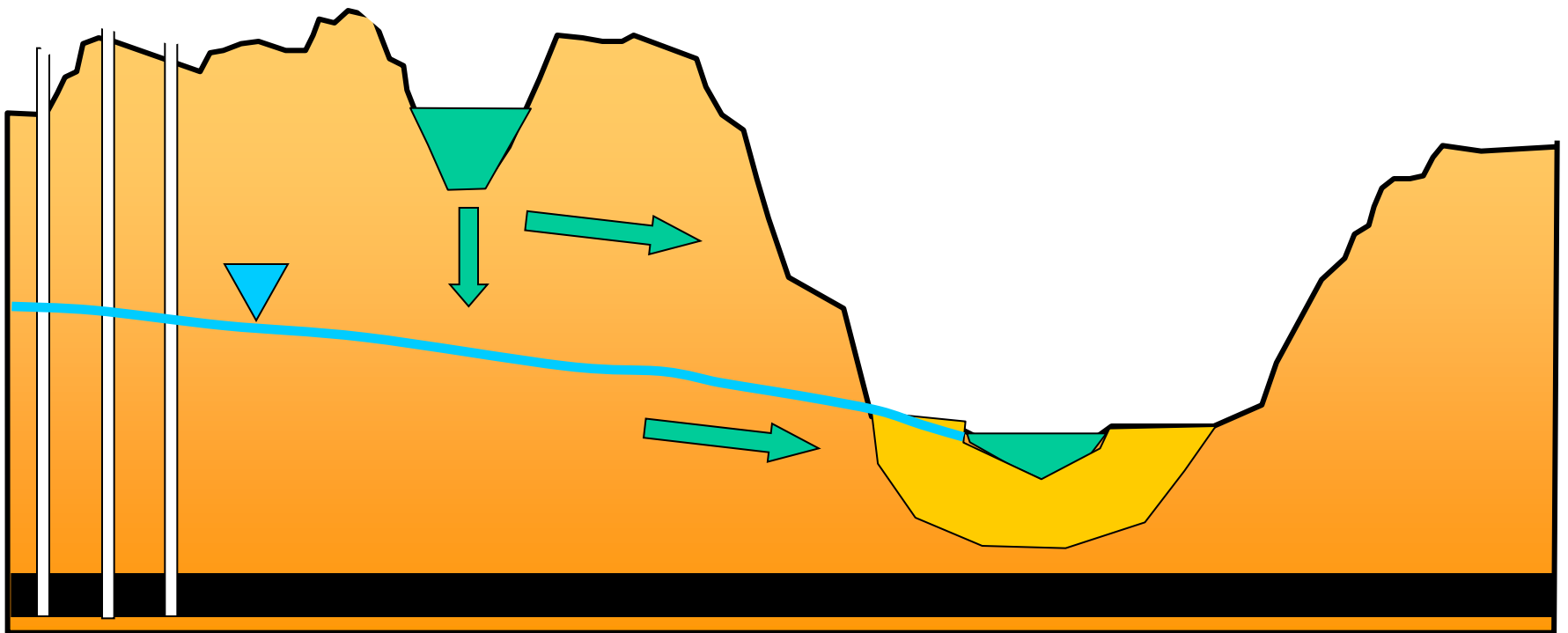




Discharge from CBM wells to infiltration pond

Where the water goes

What changes in water quality occur









Evaporation Ponds





Thanks to John Wheaton and the MT Bureau of Mines

