

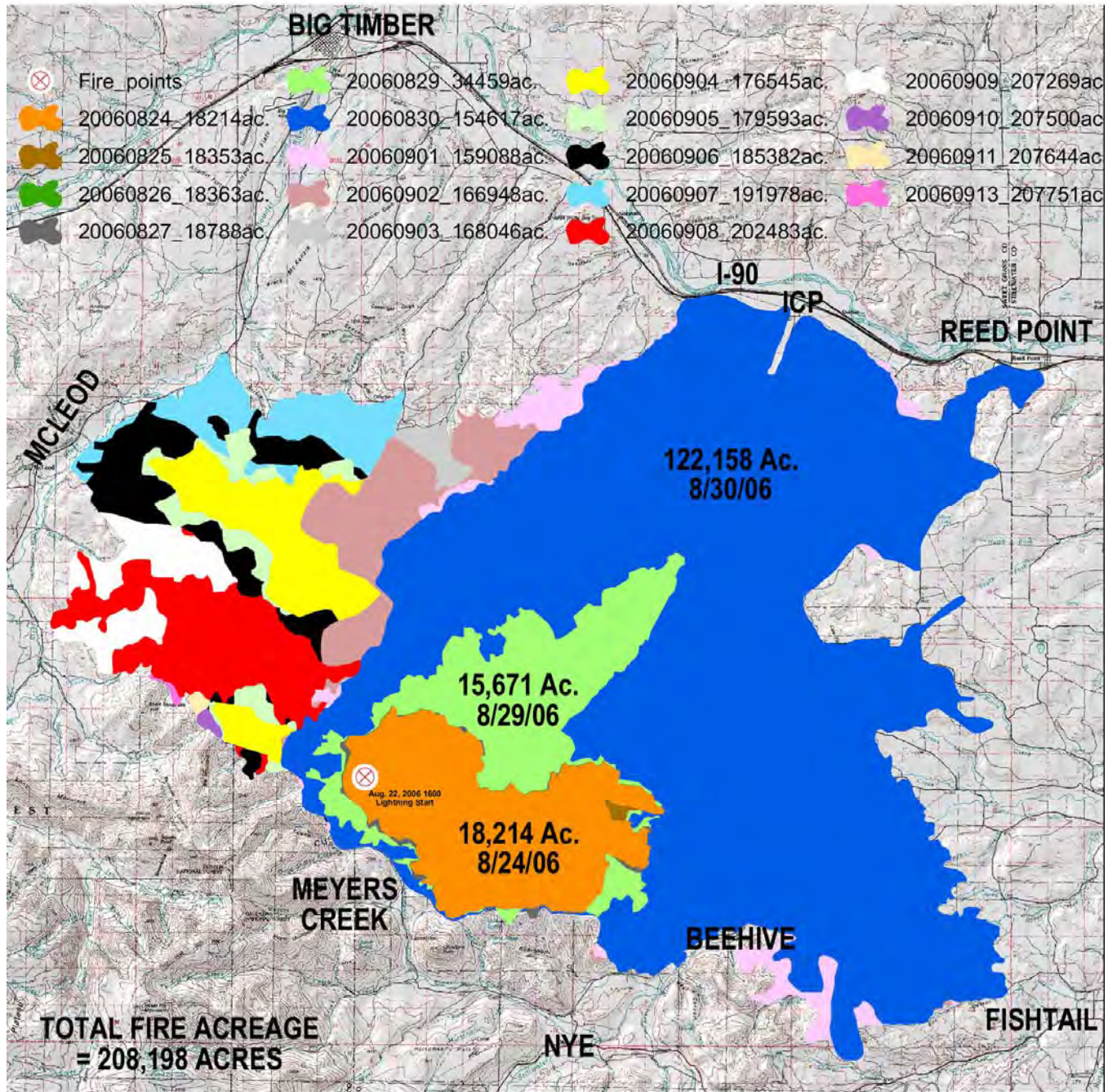


Montana Conservations Districts Involvement in Fire Rehabilitation

NASCA 2008

**Karl Christians
MT DNRC CARDD**

DERBY FIRE PROGRESSION MAP AUGUST 22 - SEPTEMBER 13, 2006



2006 Fire Rehab Team

- Limited resources resulted in CARRD offering help.
- Organized small group within DNRC, NRCS, CD, RC&D, and a few other agency people to identify suppression damage on these fires.
 - Bundy RR
 - Pine Ridge
 - Derby
 - Emerald Hills
 - Saunders, Pulaski, Buffalo Creek, Watt & Horton Hay Fires
- Also, this group
 - talked to landowners in person, relayed up to date info on programs available etc.
 - worked with agencies involved
 - assisted with immediate planning and long term needs
 - drafted rehab plans, identified other types of fire damage, potential watershed drainage concerns from future runoff
 - Developed maps of dozer lines, others suppression related damages.









What we found was:

- Landowners were desperate to talk to someone about what happens now.
 - They were exhausted, stressed, angry, confused.
- Having NRCS conservationist with us proved very beneficial.
 - Landowner usually recognized them, thus gave a calming effect.
- We worked with landowners and were able to assist them directly, or get the info they needed.
- We were able to visit with landowners on long term needs that were not suppression related as well.
 - Burned fences, waterlines, corrals, buildings, Hay loss
 - Potential need for reseeding, weed control.

What the team accomplished:

- Suppression lines were rehab'd quickly, and in time to minimize erosion from rainfall.
- Organized seed disbursement
- Provided means for landowners to obtain assistance when they wouldn't be able to otherwise (equip)
- Natural resources were addressed locally.
- Developed lines of communication for landowners.



Derby Fire Multi-Agency BAER Team

Final Burn Intensity



Legend

Derby Fire Perimeter as of 9/19/2006

Roads

INTERSTATE
 PRIMARY; SECONDARY
 CITY-COUNTY
 USFS

Streams

County Border

National Forest Boundary

Burn Intensity

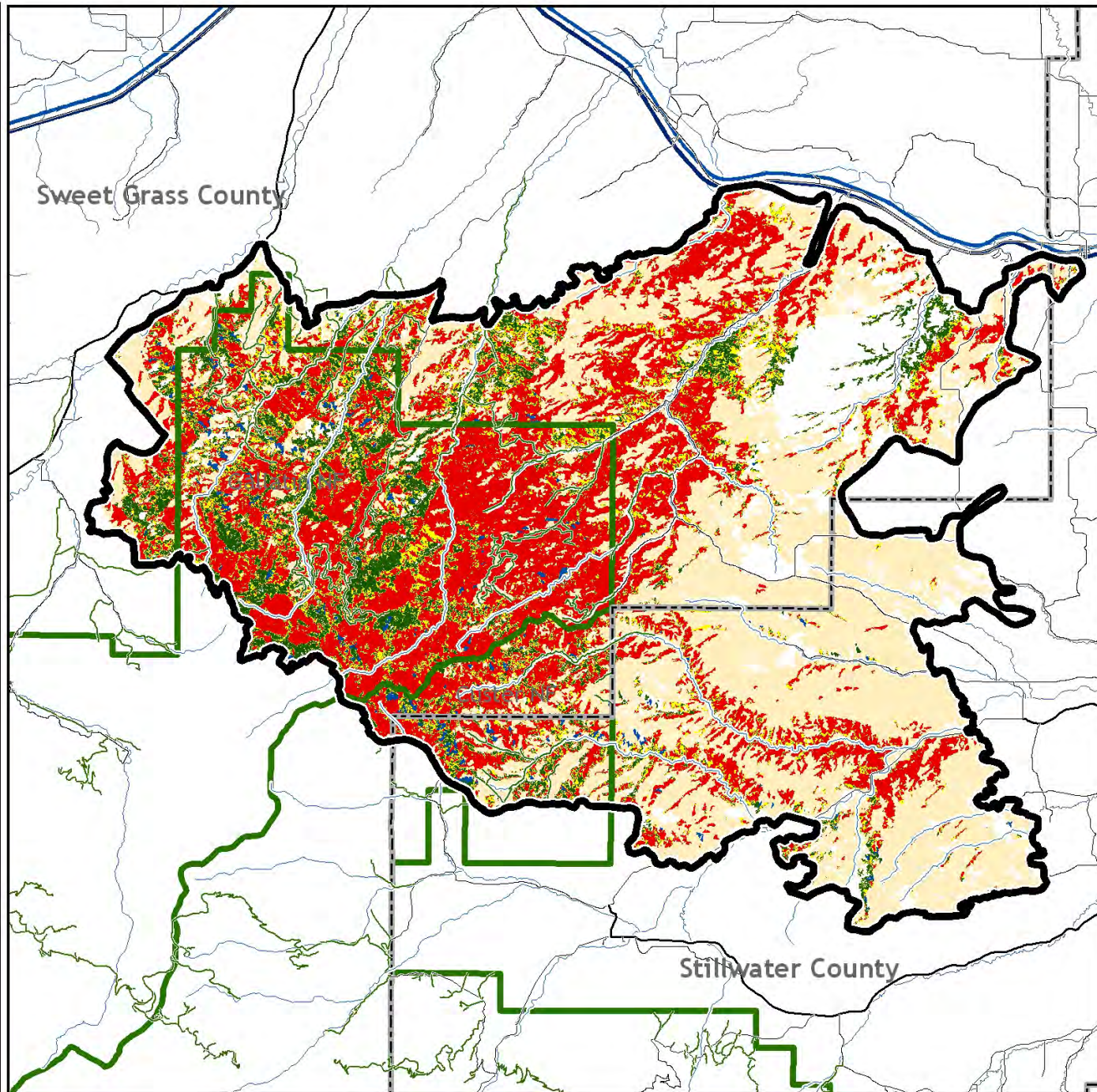
Unburned Grasslands
 Burned Grasslands
 Unburned Forest Land
 Moderate Intensity Burn Forest Land
 High Intensity Burn Forest Land
 Other (e.g., Rock, Water)

Burn Intensity based on 09/18/2006
Landsat Image provided by the
US Forest Service Remote Sensing
Applications Center (RSAC).

Disclaimer: The Team's special products were developed for a medium-scale assessment at a scale of 1:24,000. As such, use of these products for more detailed purposes may not be appropriate. Original data was compiled from various sources and is the most current data available. Spatial information may not meet National Map Accuracy Standards. This information may be updated, corrected, or otherwise modified without notification.

Date created: 9/27/2006 18:10
Created By: K. McCartney, USFS
Map Document: BurnIntensity@x11_Final.pdf

For more information, contact the Gallatin National Forest,
the Custer National Forest,
Stillwater County, Sweet Grass County, or your local USDA
Natural Resource Conservation Service Office.



Gov's Contingency Funding

Goal of funding is to minimize erosion and weed infestation on high intensity burned acreage in Sweet Grass and Stillwater County's.

Jan 4, 2007	Governor allocated 200K for restoration of the derby fire.
Jan 9	DNRC met with SWCD
Jan 10	Letter and grant application went out to landowners
Jan 26	deadline for grant application
Jan 27	130,000 lbs grass seed ordered for DNRC & EQUIP acres
End of Mar	15,000+ acres aerial seeded on high intensity burns areas







OCT 2007



Aug 2008

Advantages of involving the CD's:

- CD's & Supervisors know landowners and their concerns
- Are local to the area
- Know the specific natural resource area
- Can be the main contact once fire is over and people are gone
- Can sponsor grant projects such as reseed and weed control
 - SGCD sponsored numerous landowners on the Derby Fire with EQIP
 - SWCD received grant to reseed intense burn areas
- Provided support and team members to the BAER Team

Other advantages of CD's

- Administer the Derby Fire Emergency Contingency Grant \$200K
 - Aerially seeded over 12,000 acres (EQIP & Cont Fund Acres)
 - Will have around \$20K for on the ground weed mapping & control in SG & SW counties.
- CD's Administer National Fire Plan Grant Fund (2000 fires).
- CD Fire Mitigation Project
- Cool Fun stuff



QUESTIONS?

FREEDOM
FROM
WAR

THE End OF
THE WELFARE
STATE IS THE
BEGINING OF THE
POLICE STATE

EVERY THING
YOU KNOW
IS WRONG

Public Access Across
Private Property Until
Aug 10, 2009
Please Stay On Trail