

# Mississippi Watershed Repair & Rehabilitation Cost Share Program



# Mississippi Soil & Water Conservation Commission

- ∅ MSWCC was created by the Mississippi legislature in 1938 with the passage of the Soil Conservation Law (currently Soil and Water Conservation Law)
- ∅ That law made provisions whereby each county could organize a soil and water conservation district.
- ∅ 82 districts were created over a ten year period 1938-48.
- ∅ MSWCC is governed by a board of 11 members including the Commissioner of Agriculture; the President, 1<sup>st</sup> Vice President, 2<sup>nd</sup> Vice President and Immediate Past President of the MS Association of Conservation Districts; one member from each of the 4 Congressional Districts; one at large member from the Congressional Districts; the state Forester; two Ex-Officio members (Director of Cooperative Extension Service, Director of MS Agricultural and Forestry Experiment Station.
- ∅ The NRCS State Conservationist is invited to serve as an advisor to the board.

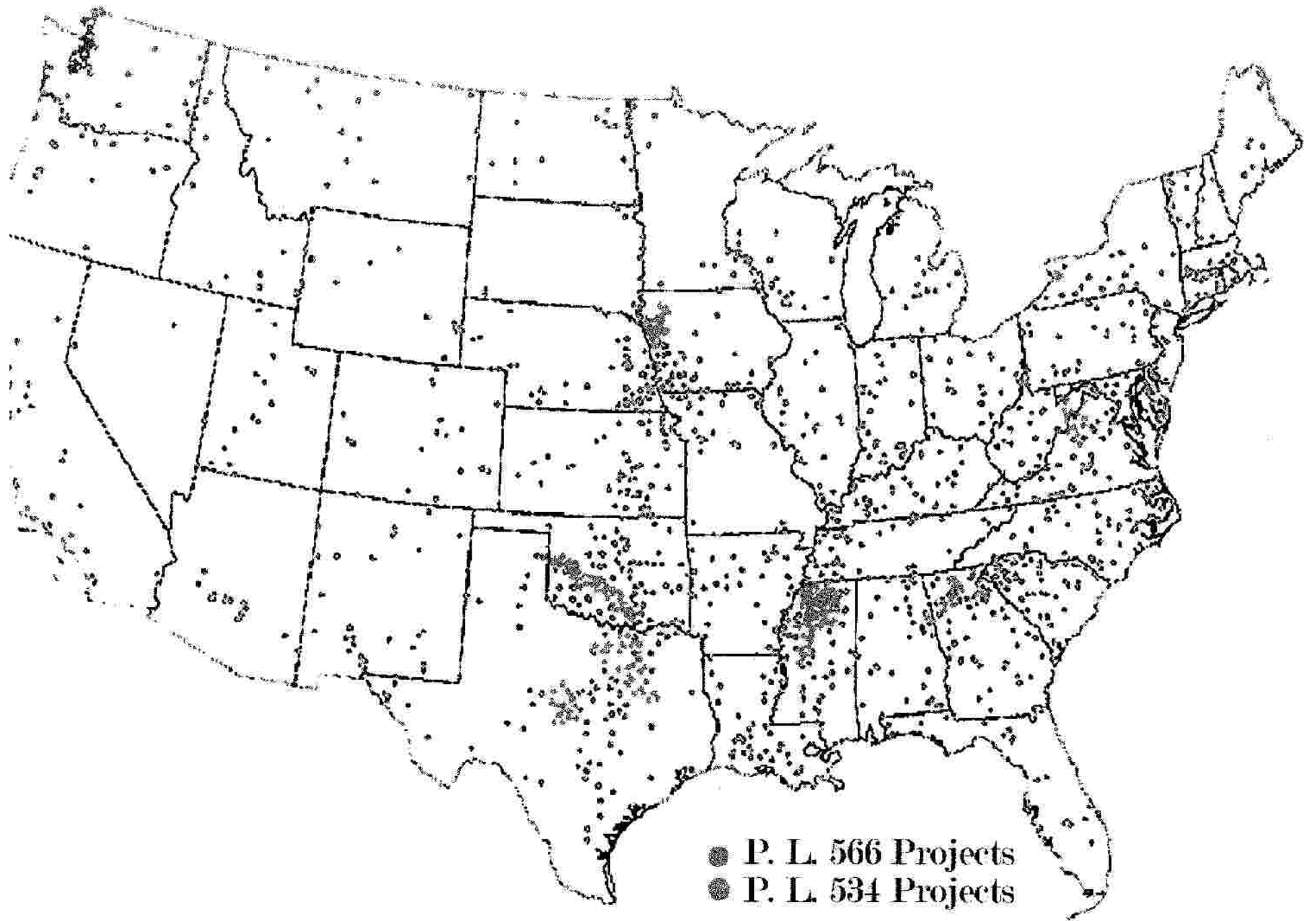
- ∅ The function of the MSWCC is administrative (not technical)
- ∅ 3 Major Programs
- ∅ District Assistance – 7 field representatives that assist the 82 districts in carrying out their various conservation programs (mainly I&E programs such as conservation carnivals and field days)
- ∅ Surface Mining Program – MSWCC serves as a liaison between the districts and the State Office of Geology to insure that reclamation plans for mining permits are adequate and that erosion will be controlled on mined sites.
- ∅ Water Quality Program – includes MSWCC Water Quality Cost Share Program (319), Pond Renovation Program, Revolving Loan Fund Program, Education Enhancement Program, and the Watershed Repair and Rehabilitation Program.



# Mississippi Watershed Repair & Rehabilitation Program

- ∅ Created by the Mississippi legislature in 1997 for the purpose of assisting local watershed districts in the repair, rehabilitation or removal of water impoundment structures constructed under Public Law 534 and Public Law 566





- P. L. 566 Projects
- P. L. 534 Projects

∅ Approximately 800 FWRS

∅ Approximately 1,500 CMP



Ø MSWCC staff developed rules and regulations for the Watershed Repair and Rehabilitation Program and they were approved by the MSWCC Board.

1. The Commission, and it's staff, shall , as often as is practicable and in accordance with state and federal law, coordinate its watershed structure rehabilitation and repair efforts with the USDA's Natural Resources Conservation Service.
2. The Commission will cost share with an accountable sponsor for the repair, rehabilitation or removal of a watershed structure.
3. The Commission staff shall determine what board, agency, person, persons, or political subdivision shall be considered an accountable sponsor to participate in the program.
4. As a requirement for participation in the program, an accountable sponsor must agree to submit annually a report containing a summary of the annual inspection of the subject structure and a summary of the expenses associated with the maintenance of the subject structure.

5. The Commission hereby adopts a three tiered cost share schedule being:

- a. 90% cost share/ 10% match
- b. 80% cost share/ 20% match
- c. 70% cost share/ 30% match

The cost share rate shall be determined by the reference number assigned to the county in which the structure is located. The reference number shall be determined by the total assessed valuation of the county as currently reported to the State of Mississippi State Tax Commission. The reference numbers shall be:

- a. Less than \$60,000,000
- b. Greater than \$60,000,000 but less than \$120,000,000
- c. Greater than \$120,000,000

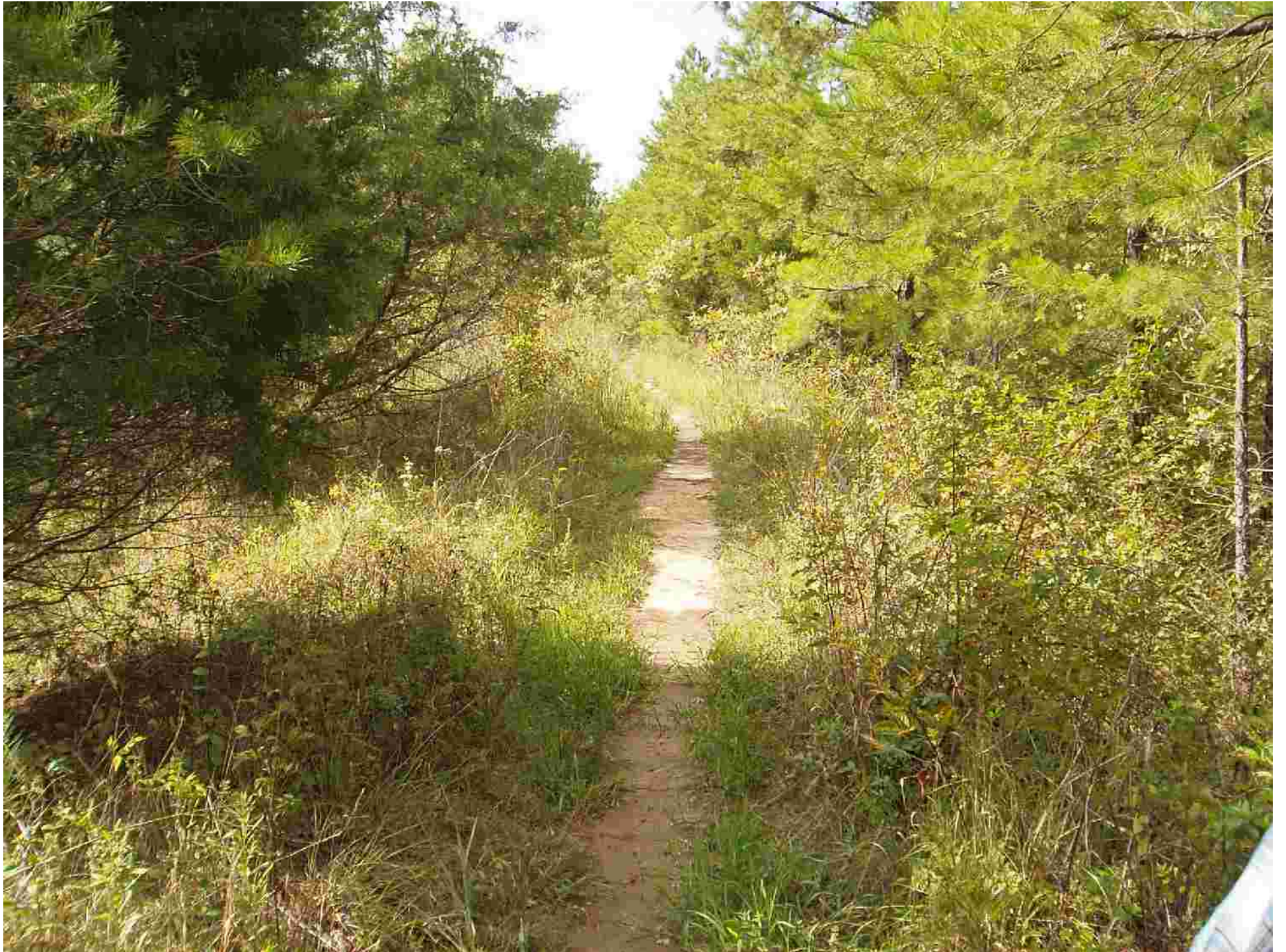
In those watersheds which cross county lines the cost share rate shall be determined by the lowest reference number of any county in the watershed.



6. An accountable sponsor may use in kind work, services or materials for its required match. The work, service or materials may be provided by the sponsor or any other entity on behalf of the sponsor.
7. Any form of match provided by, or on behalf of, a sponsor which exceeds the required match may be carried over and used as match on another qualifying structure within the watershed or county.
8. The Commission staff is authorized to commit funds from the program an any amount up to \$100,000 per structure. Any expenditure in excess of \$100,000 per structure must receive specific approval of the MSWCC board.

# Funding

- ∅ MSWCC received five million dollars in bonding authority for the program when it began.
- ∅ Those bonds were sold and the last of the funds were expended in May of this year.
- ∅ To date, we have cost shared for the rehabilitation of 197 structures.
- ∅ Asked state legislature for an additional five million dollars in bonding authority this year.
- ∅ Received one million in authority









8/3/2006



5/15/2007







7/3/2007