



# Water Use Registration Program

*Mike A. Guess*  
*Water Use Specialist*

# History of Water Registration in the State of Arkansas



- S Water use registration began in the 1950's
- S The current registration program began in 1985
- S The program is administered by the Arkansas Natural Resources Commission (ANRC)



Through the cooperation of various local, state, and federal agencies the Water Use Registration Program has become one of the counties most comprehensive inventories of site-specific water usage data from more than 55,000 surface and groundwater withdrawal points.





# The Laws and the Rules & Regulations

- S Arkansas codes pertaining to the Water Use Registration Program: 15-22-205, 15-22-215, 15-22-301, 15-22-302, 15-22-913, 15-22-914, & 15-22-915
- S Title III – “Rules for the Protection and Management of Ground Water”
- S Title IV – “Rules for the Utilization of Surface Water”





# Types of Withdrawals that Register

**S** Any non domestic under ground water withdrawal (well or natural spring) that has the potential of 50,000 gallons a day (35 gpm flow rate) should be registered.



**S** Any surface water withdrawal, that is not from a natural lake/pond in the exclusive ownership of one person, not diffused surface water, or not recirculated surface water, that withdrawals 1 acre foot or more a year (325,851 gals.) should be registered.





# What Information is Collected

S Contact information: name, address, etc... of water user and/or land owner



S Location of withdrawal: latitude & longitude and legal description

S Pump information: type, horsepower, etc...



S The use of the water withdrawn

S Monthly and annual withdrawal amounts





# Registered Types of Water Usage

## Agricultural Usage

Irrigation



54,000 Withdrawals

Agriculture



100 Withdrawals

## Non Agricultural Usage

Commercial



100 Withdrawals

Industrial



200 Withdrawals

Mining



30 Withdrawals

Power Supply



40 Withdrawals

Water Supply



800 Withdrawals

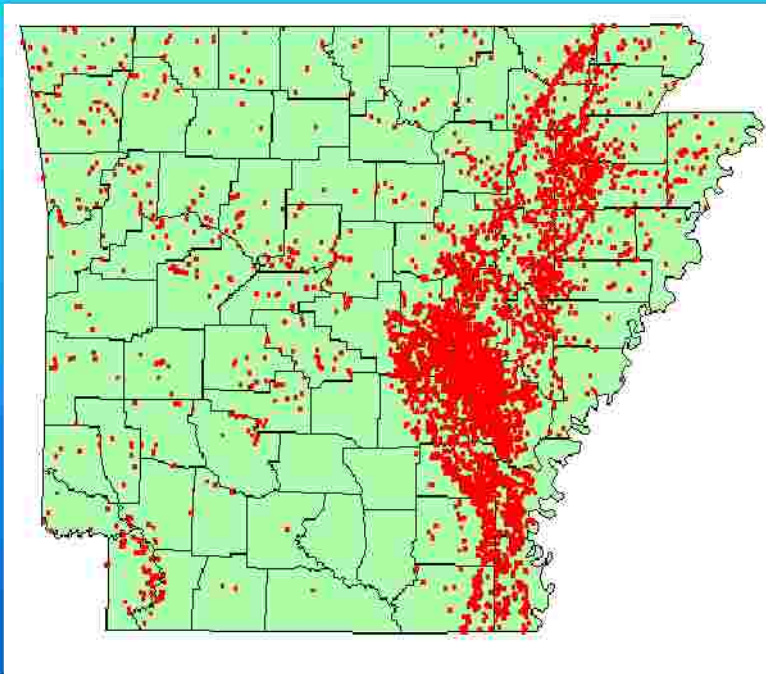




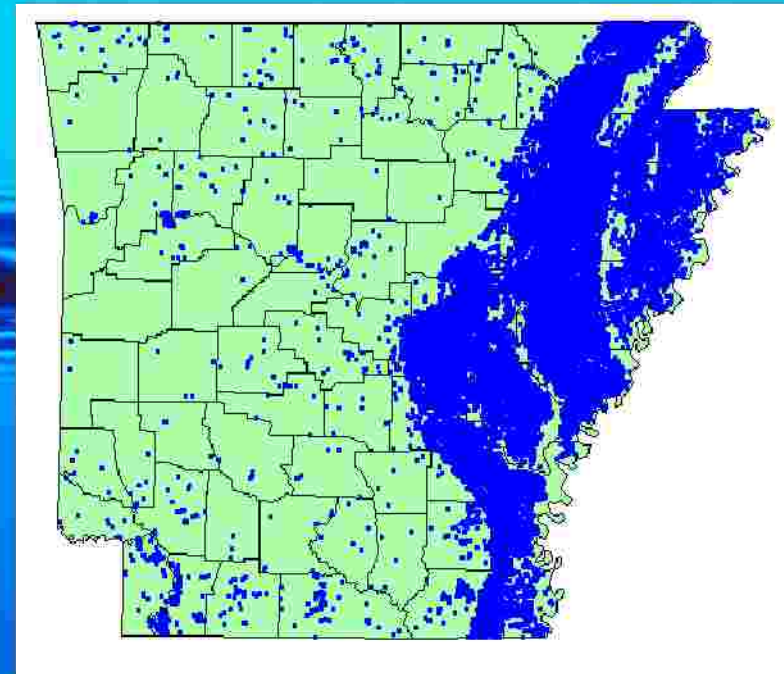
# Registered Withdrawal Site Locations

Surface water: 6,100 sites

Ground water: 49,000 sites



7,300 m. gal./d. Withdrawn



3,700 m. gal./d. Withdrawn





# Arkansas Natural Resources Commission

- S Inventory the surface and ground water resources by registering water users, each year from October 1 thru March 1
- S Collect from water users a registration fees of \$10.00 per withdrawal site
- S Contact and collect penalties form delinquent water users (water use that fail to report and/or pay fees before March 1 registration deadline)
- S Delegate authority to those other agencies and organizations that assist with the registration program
- S Provide assistance and training to those organizations that assist with water use registration







# Commission's Use of Registration Fees

- S Fees and penalties collected by the ANRC are deposited in the Arkansas Water Development
- S Two-thirds ( $2/3$ ) of all funds deposited shall be used for an education and information program and/or cost sharing for water conservation and development
- S The remaining one-third ( $1/3$ ) must be used for the administration costs

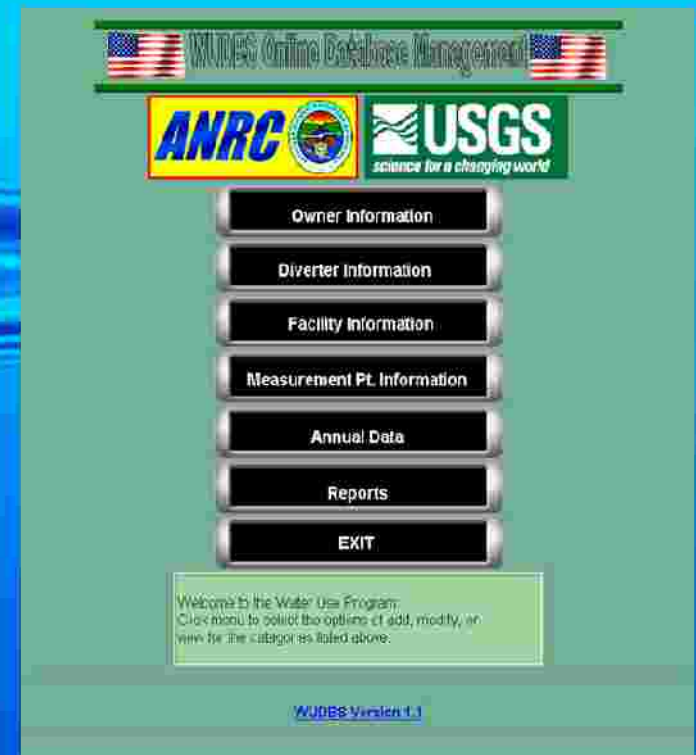




# U S Geological Survey Arkansas District

## Through a cooperative agreement with ANRC

- S Developed and maintains the water use registration data base
- S Developed and maintains the website data entry program in which all registration data is entered into the data base
- S Provides assistance and training to all of those who use the data entry website





# Arkansas Association of Conservation Districts

Through a cooperative agreement with ANRC

- S 29 districts register agricultural water users in their district
- S Enter information directly into the registration data base through the data entry website
- S Keep half (1/2) of all registration fees and two-thirds (2/3) of penalties in the their district
- S Required to allocate registration money the same as ANRC



Districts in green participate in the Water Use Registration Program





# Natural Resources Conservation Service Arkansas District

S Provides Internet connection to conservation districts that participate in the Water Use Registration Program



S Provides office space to some of those districts

S Provides a computer to certain districts to enter registration data on the data entry website



# How Registration Data is Used

## ANRC Uses of Registration Data



### Ground water data is used:

- S To help develop comprehensive ground water protection program
- S To help designate critical ground water areas
- S To help establish ground water rights within critical areas

### Surface water data is used:

- S To help allocate water in times of shortages
- S As a basis for determining the state's overall usage
- S As Water needs for inclusion in the Arkansas Water Plan



# How Registration Data is Used

## USGS Uses of Registration Data



- S Ground water flow model input
- S NAWQA – determination of potential sample locations
- S River assessment (White River)
- S Water level program – potential study sites

## Data Provided to Others:

- S US Forest Service – identify water users in major forests
- S NPS – Flow data for Hot Springs
- S USACE – Flow data for model input
- S Data is provided to numerous other organizations as requested



# Benefits to Registered Water Users

- S Cost share program to help offset costs for water conservation practices, up to 40% (Example: land leveling, flow meters, etc...)
- S Registered ground water users have the benefit of being grandfathered if they are in an area that is declared a critical ground water area (A three year history of registration records is required)
- S Registered surface water users are insured a precedence to water over a non registered water user, in times of allocation
- S If a registered water user is involved in a legal dispute over water they will have a better position over a non registered water user



# Summary

- S Arkansas' Water Use Registration Program provides protection to insure that the state's water resources are here for everyone to use for centuries to come.
- S Arkansas' Water Use Registration Program is so successful because of the efforts and cooperation of all of those involved. This not only includes the State & federal agencies and local organization, but all the users that accurately report their withdrawal information and water usage.

