

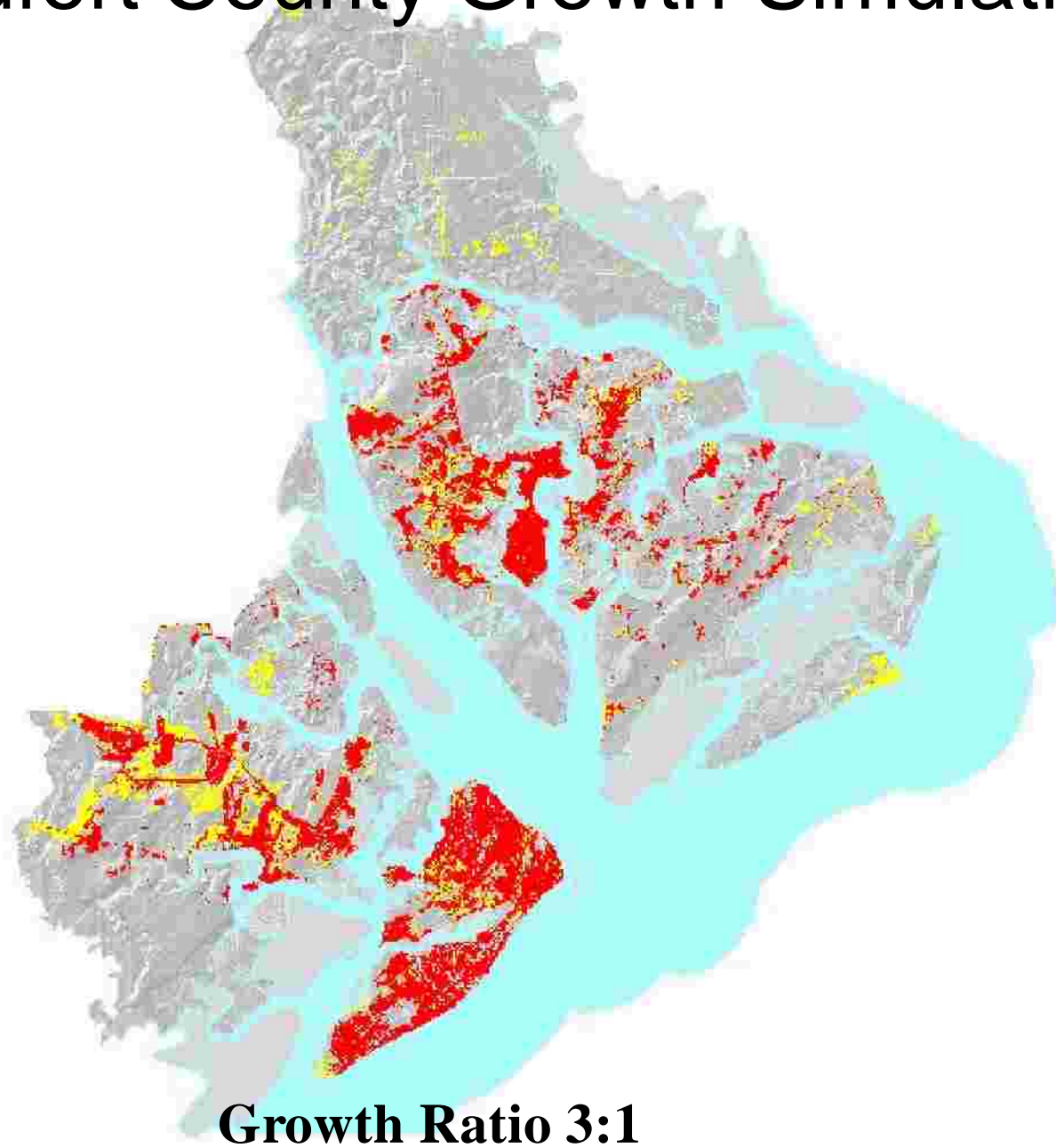
“A concerted community effort to protect the natural resource base in Jasper County for generations to come....”

A map of South Carolina where the entire state is filled with a solid blue color. A small region in the southern part of the state is highlighted in a lighter cyan color. A white rectangular box with a black border is positioned over the cyan area, containing the text "Jasper County, South Carolina".

Jasper County, South Carolina



Beaufort County Growth Simulation









TO

NORTH

INTERSTATE
SOUTH CAROLINA
95

←

P ↗
PARKING

**FLORIDA'S
FULL!**

Golf Homes in
Hilton Head
from the 280's!



Island
West

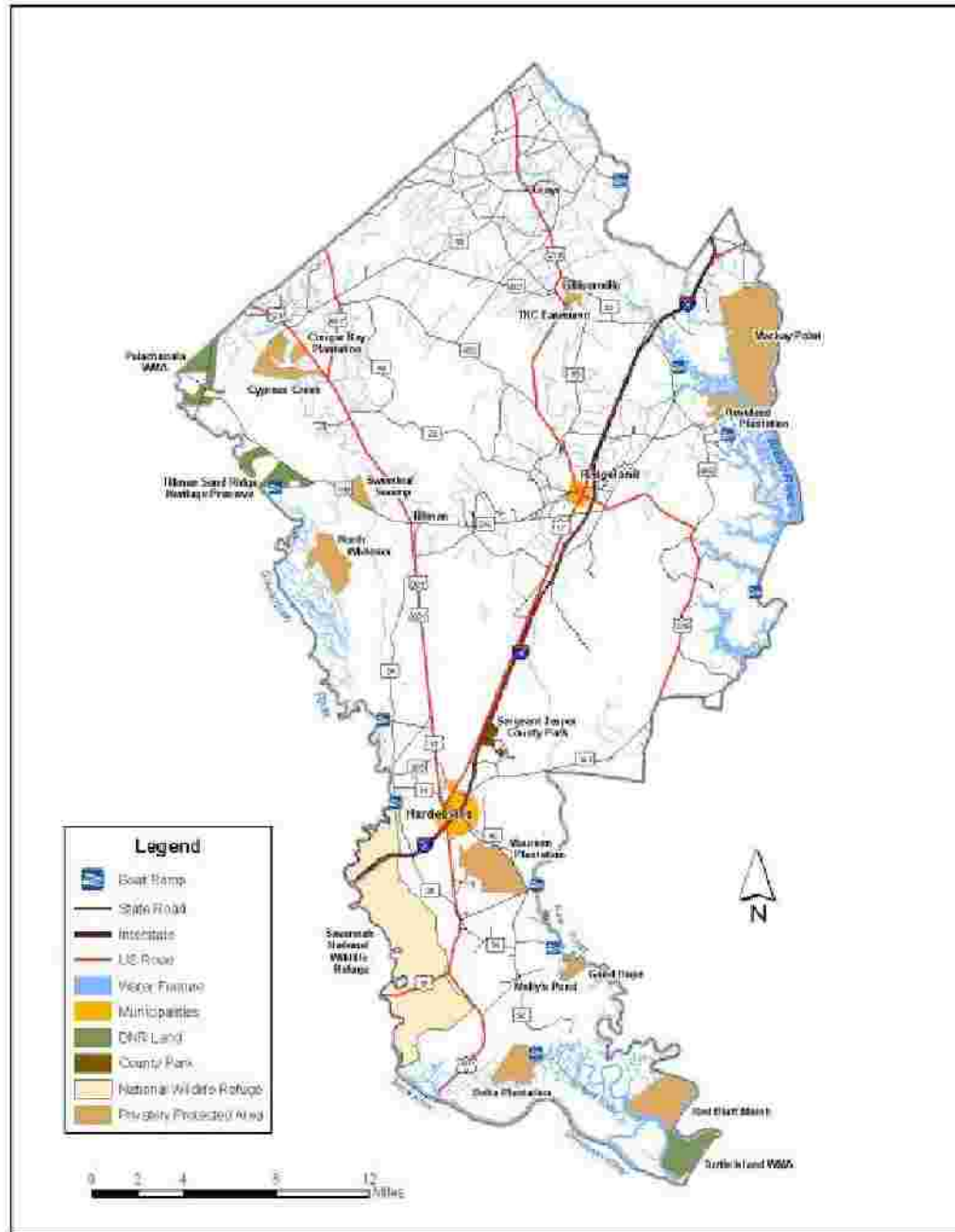
Exit 8 9 miles ahead to Island West!

D-R-HORTON 1954
America's Builder

843-706-3600
drhorton-homes.com



ALWAYS



Margaret Mead



“Never doubt that a small, thoughtful group of concerned citizens can change the world. Indeed, it is the only thing that ever has.”

Locally Led Conservation

- **It starts with our community leaders – Jasper SWCD**
- **Critical element - community stakeholders**
- **It is based on the principle that community stakeholders are best suited to deal with local resource problems**
- **Its primary focus should be to identify natural resource concerns, along with related economic and social concerns**

Our Goal

- **Government, NGO's, and Private Sector**
 - All work together!
- **Develop a conservation plan that will serve as a platform for making decisions about local priorities and policies for conservation strategies at the local level**
- **Conserve not just land, but the Economy and Quality of Life**

Our Game Plan

- 1. Assess the natural resources and conservation needs**
- 2. Set community conservation goals**
- 3. Develop an action plan**
- 4. Implement the plan**
- 5. Measure success**

PARTNERSHIPS

The Key To Success

- Jasper Soil and Water Conservation District
- USDA-Natural Resources Conservation Service
- SC Department of Natural Resources
- SC Sea Grant Consortium
- USDA- Farm Service Agency
- American Farmland Trust
- USFWS – Refuges and Ecological Services Divisions
- Clemson University Cooperative Extension Service
- The Nature Conservancy
- U.S. Army Corps of Engineers
- SC Forestry Commission
- Good Hope Corporation
- Turkey Hill Plantation
- Okeetee Club
- Spring Hill Plantation
- Nada Williams Realty
- Copper Station
- Private Landowners
- SC Department of Health and Environmental Control
- Ocean of Coastal and Resources Management
- Jasper County
- Town of Ridgeland
- City of Hardeeville
- NOAA – CSC
- Town of Bluffton
- Beaufort County Planning Department
- Beaufort County Open Land Trust
- AgSouth
- AAC Building Service
- SC Conservation League
- Lowcountry Council of Governments
- TPL
- Fife Plantation
- Kinghorn Insurance Companies
- Lowcountry Institute
- Mead-Westvaco

The Focus Group

- **A Collaborative Effort To Gather Information**
- ***THE WRITING TEAM***













Savannah National Wildlife Refuge

A wide-angle photograph of a wetland landscape. In the foreground, there are tall, thin reeds or grasses. The middle ground is dominated by a large body of water, likely a pond or marsh, where hundreds of ducks are gathered. Some ducks are swimming, while others are standing on the muddy banks. The background consists of a dense line of trees and shrubs under a clear, bright sky.

28% of all the ducks surveyed in South Carolina











Urban Growth Management

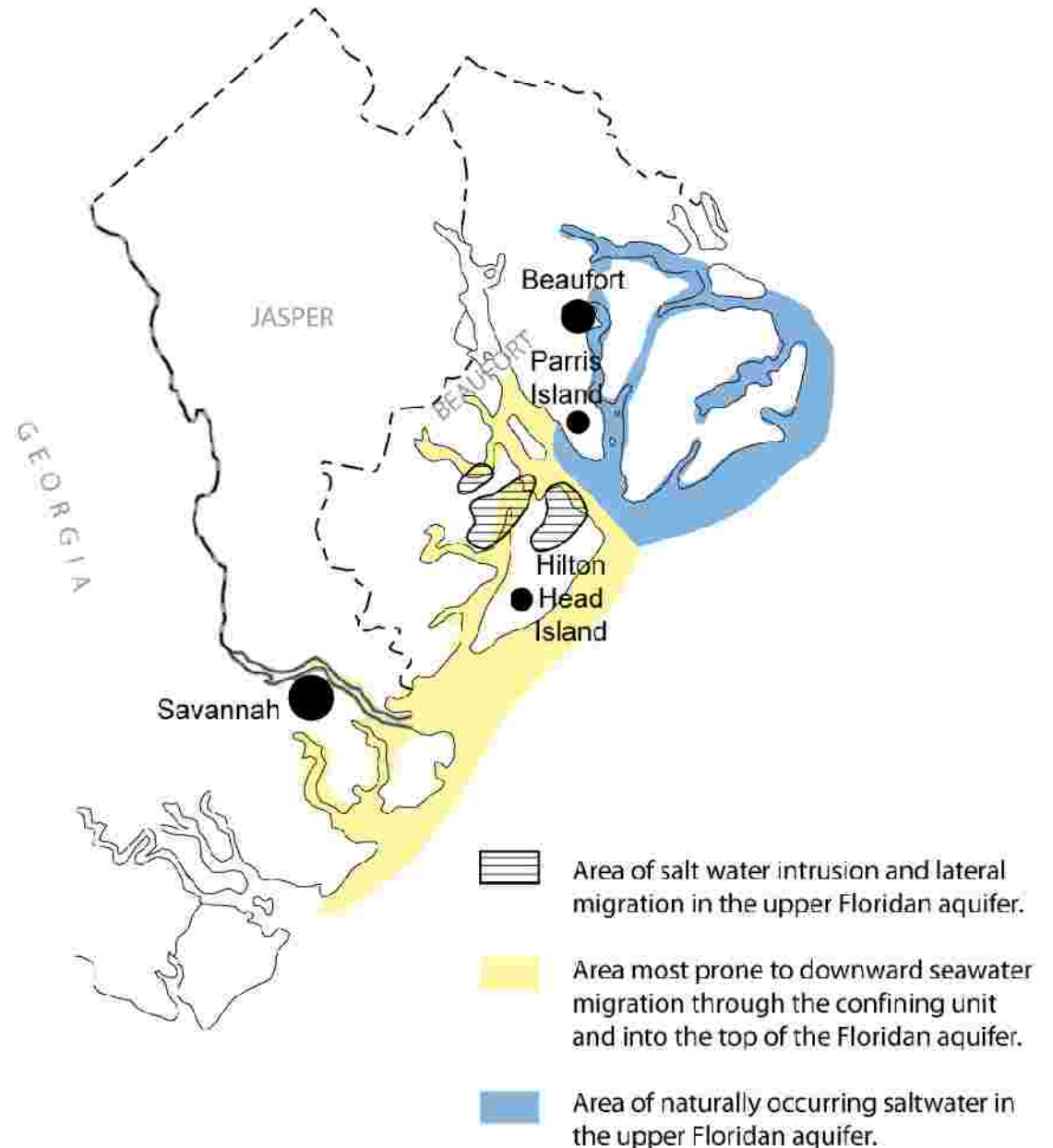
- **Urban Growth Boundaries**
- **Natural Resources Review Team**
- **Transfer of Development Rights**
- **Purchase of Development Rights**
- **Conservation Easements**
- **Impact Fees – Priority Based**
- **County Conservation Bank**

STRATEGIES

- **Agricultural Districts – Protecting rights to farm and actively manage land**
- **Prescribed Fire Ordinance and Firewise Communities**
- **More Incentives for Conservation Easements**
- **Natural Resources Review Team – Minimize loss of critical lands and ensures quality management of urban landscapes**
- **Focus Urban Development around Current Municipalities**

Streams, Rivers, and Watersheds

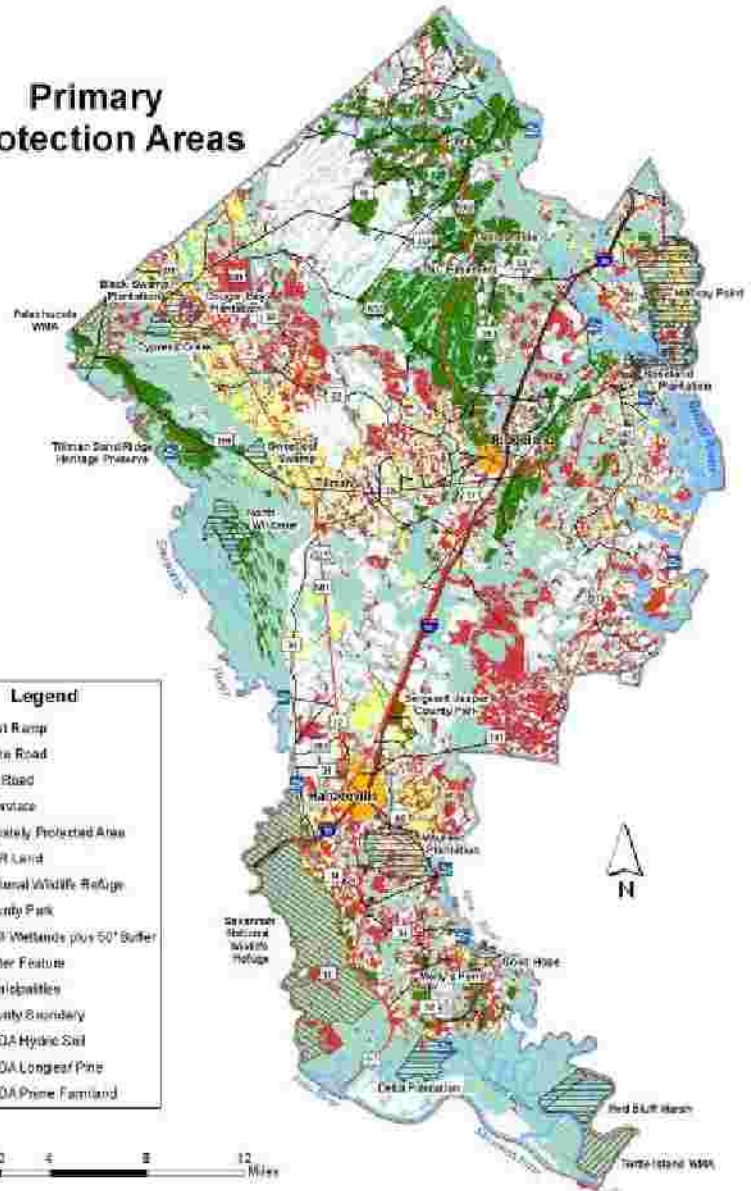
- Low Impact Development Techniques
- New River as a State Scenic River
- Minimum Buffers



Primary Protection Areas

Legend

- Boat Ramp
- State Road
- US Road
- Interstate
- Privately Protected Area
- DNR Land
- National Wildlife Refuge
- County Park
- NWI Wetlands plus 50' Buffer
- Water Feature
- Municipality
- County Boundary
- USDA Hydric Soil
- USDA Longleaf Pine
- USDA Prime Farmland



Economics and Natural Resources

- **Expand and diversify wildland recreation opportunities**
- **Partner for Tourism**
- **Update Economics Study**



18 1:22 PM



Jasper County Conservation Plan

A Summary

- **Identify the natural, cultural and historical resources of Jasper County**
- **Actively manage urban growth by utilizing “quality growth tools”**
- **Protect our traditional and critical land management tools**
- **Identify critical areas that need permanent protection**
- **Develop an environmental education action plan**



“If you are protecting what is inevitably an island in the midst of degradation, you’ve lost.” –Bruce Babbitt

www.blueheronnature.com

